



Title Plan - LT 534851

Survey Number LT 534851
Surveyor Reference 37504 Arran Hill Precinct 5 Stages 3B and 4
Surveyor Kendall Lisa Reid
Survey Firm Wood & Partners Consultants Ltd
Surveyor Declaration I Kendall Lisa Reid, being a licensed cadastral surveyor, certify that:
(a) this dataset provided by me and its related survey are accurate, correct and in accordance with the Cadastral Survey Act 2002 and the Rules for Cadastral Survey 2010, and
(b) the survey was undertaken by me or under my personal direction.
Declared on 18 Oct 2019 10:55 AM

Survey Details

Dataset Description Lots 48-53, 164-173, 196-212, 216-230, 902-904 & 1001 being a Subdivision of Lot 1001 DP 527534
Status Approved as to Survey
Land District North Auckland
Submitted Date 18/10/2019
Survey Class Class A
Survey Approval Date 21/10/2019
Deposit Date

Territorial Authorities

Auckland Council

Comprised In

RT 850584

Created Parcels

Parcels	Parcel Intent	Area	RT Reference
Lot 50 Deposited Plan 534851	Fee Simple Title	0.0709 Ha	895473
Lot 49 Deposited Plan 534851	Fee Simple Title	0.0655 Ha	895474
Lot 48 Deposited Plan 534851	Fee Simple Title	0.0653 Ha	895475
Lot 196 Deposited Plan 534851	Fee Simple Title	0.0450 Ha	895476
Lot 197 Deposited Plan 534851	Fee Simple Title	0.0450 Ha	895477
Lot 198 Deposited Plan 534851	Fee Simple Title	0.0450 Ha	895478
Lot 199 Deposited Plan 534851	Fee Simple Title	0.0550 Ha	895479
Lot 200 Deposited Plan 534851	Fee Simple Title	0.0516 Ha	895480
Lot 201 Deposited Plan 534851	Fee Simple Title	0.0526 Ha	895481
Lot 225 Deposited Plan 534851	Fee Simple Title	0.0450 Ha	895482
Lot 226 Deposited Plan 534851	Fee Simple Title	0.0450 Ha	895483
Lot 227 Deposited Plan 534851	Fee Simple Title	0.0450 Ha	895484
Lot 228 Deposited Plan 534851	Fee Simple Title	0.0550 Ha	895485
Lot 229 Deposited Plan 534851	Fee Simple Title	0.0523 Ha	895486
Lot 230 Deposited Plan 534851	Fee Simple Title	0.0650 Ha	895487
Lot 202 Deposited Plan 534851	Fee Simple Title	0.0522 Ha	895488
Lot 203 Deposited Plan 534851	Fee Simple Title	0.0458 Ha	895489
Lot 204 Deposited Plan 534851	Fee Simple Title	0.0546 Ha	895490
Lot 205 Deposited Plan 534851	Fee Simple Title	0.0450 Ha	895491
Lot 206 Deposited Plan 534851	Fee Simple Title	0.0451 Ha	895492

Title Plan - LT 534851

Created Parcels

Parcels	Parcel Intent	Area	RT Reference
Lot 207 Deposited Plan 534851	Fee Simple Title	0.0466 Ha	895493
Lot 217 Deposited Plan 534851	Fee Simple Title	0.0509 Ha	895494
Lot 218 Deposited Plan 534851	Fee Simple Title	0.0543 Ha	895495
Lot 219 Deposited Plan 534851	Fee Simple Title	0.0450 Ha	895496
Lot 220 Deposited Plan 534851	Fee Simple Title	0.0552 Ha	895497
Lot 221 Deposited Plan 534851	Fee Simple Title	0.0450 Ha	895498
Lot 222 Deposited Plan 534851	Fee Simple Title	0.0450 Ha	895499
Lot 223 Deposited Plan 534851	Fee Simple Title	0.0450 Ha	895500
Lot 224 Deposited Plan 534851	Fee Simple Title	0.0467 Ha	895501
Lot 208 Deposited Plan 534851	Fee Simple Title	0.0551 Ha	895502
Lot 209 Deposited Plan 534851	Fee Simple Title	0.0550 Ha	895503
Lot 210 Deposited Plan 534851	Fee Simple Title	0.0550 Ha	895504
Lot 211 Deposited Plan 534851	Fee Simple Title	0.0500 Ha	895505
Lot 212 Deposited Plan 534851	Fee Simple Title	0.0651 Ha	895506
Lot 216 Deposited Plan 534851	Fee Simple Title	0.0650 Ha	895507
Lot 164 Deposited Plan 534851	Fee Simple Title	0.0692 Ha	895508
Lot 165 Deposited Plan 534851	Fee Simple Title	0.0650 Ha	895509
Lot 166 Deposited Plan 534851	Fee Simple Title	0.0469 Ha	895510
Lot 167 Deposited Plan 534851	Fee Simple Title	0.0468 Ha	895511
Lot 168 Deposited Plan 534851	Fee Simple Title	0.0468 Ha	895512
Lot 169 Deposited Plan 534851	Fee Simple Title	0.0468 Ha	895513
Lot 170 Deposited Plan 534851	Fee Simple Title	0.0468 Ha	895514
Lot 171 Deposited Plan 534851	Fee Simple Title	0.0468 Ha	895515
Lot 172 Deposited Plan 534851	Fee Simple Title	0.0468 Ha	895516
Lot 173 Deposited Plan 534851	Fee Simple Title	0.0554 Ha	895517
Lot 903 Deposited Plan 534851	Vesting on Deposit for Road	0.1557 Ha	
Lot 902 Deposited Plan 534851	Vesting on Deposit for Road	0.4406 Ha	
Lot 52 Deposited Plan 534851	Fee Simple Title	0.0698 Ha	895518
Lot 51 Deposited Plan 534851	Fee Simple Title	0.0712 Ha	895519
Area AK Deposited Plan 534851	Covenant - Land		
Area AL Deposited Plan 534851	Covenant - Land		
Area AM Deposited Plan 534851	Covenant - Land		
Area AN Deposited Plan 534851	Covenant - Land		
Area AO Deposited Plan 534851	Covenant - Land		
Area AP Deposited Plan 534851	Covenant - Land		
Area GA Deposited Plan 534851	Covenant - Land		
Area GB Deposited Plan 534851	Covenant - Land		
Area GC Deposited Plan 534851	Covenant - Land		
Area GD Deposited Plan 534851	Covenant - Land		
Area GE Deposited Plan 534851	Covenant - Land		
Area GF Deposited Plan 534851	Covenant - Land		
Area EU Deposited Plan 534851	Covenant - Land		

Title Plan - LT 534851

Created Parcels

Parcels	Parcel Intent	Area	RT Reference
Area ET Deposited Plan 534851	Covenant - Land		
Area ES Deposited Plan 534851	Covenant - Land		
Area ER Deposited Plan 534851	Covenant - Land		
Area EQ Deposited Plan 534851	Covenant - Land		
Area EP Deposited Plan 534851	Covenant - Land		
Area EO Deposited Plan 534851	Covenant - Land		
Area EN Deposited Plan 534851	Covenant - Land		
Area EM Deposited Plan 534851	Covenant - Land		
Area EL Deposited Plan 534851	Covenant - Land		
Area GG Deposited Plan 534851	Covenant - Land		
Area GH Deposited Plan 534851	Covenant - Land		
Area GI Deposited Plan 534851	Covenant - Land		
Area GJ Deposited Plan 534851	Covenant - Land		
Area GK Deposited Plan 534851	Covenant - Land		
Area GL Deposited Plan 534851	Covenant - Land		
Area GM Deposited Plan 534851	Covenant - Land		
Area GN Deposited Plan 534851	Covenant - Land		
Area GO Deposited Plan 534851	Covenant - Land		
Area GP Deposited Plan 534851	Covenant - Land		
Lot 904 Deposited Plan 534851	Vesting on Deposit for Road	0.3739 Ha	
Lot 53 Deposited Plan 534851	Fee Simple Title	0.0687 Ha	895520
Lot 1001 Deposited Plan 534851	Fee Simple Title	10.4080 Ha	895521
Marginal Strip II Deposited Plan 534851	Marginal Strip - Movable		
Marginal Strip HH Deposited Plan 534851	Marginal Strip - Movable		
Total Area		13.9300 Ha	

Schedule / Memorandum

Land Registration District

North Auckland

Survey Number

LT 534851

Territorial Authority (the Council)

Auckland Council

Notes

Last Edited: 25 Sep 2019 17:32:20

Land Covenants:

Areas GA to GP are subject to Land Covenants.

Areas AK to AP are subject to Land Covenants

Areas EL to EU are subject to Land Covenants.

Moveable Marginal Strips:

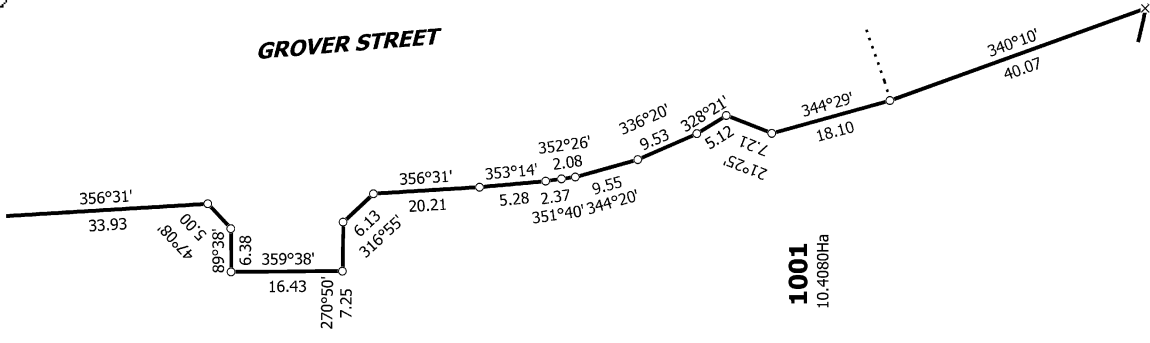
Moveable Marginal Strips HH & II are existing Moveable Strips previously shown as Areas HH & II DP 527534.

Notes:

All lots are subject to Part IVA Conservation Act 1987 (affects land formerly Sections 7, 8 & 9 SO 70137)

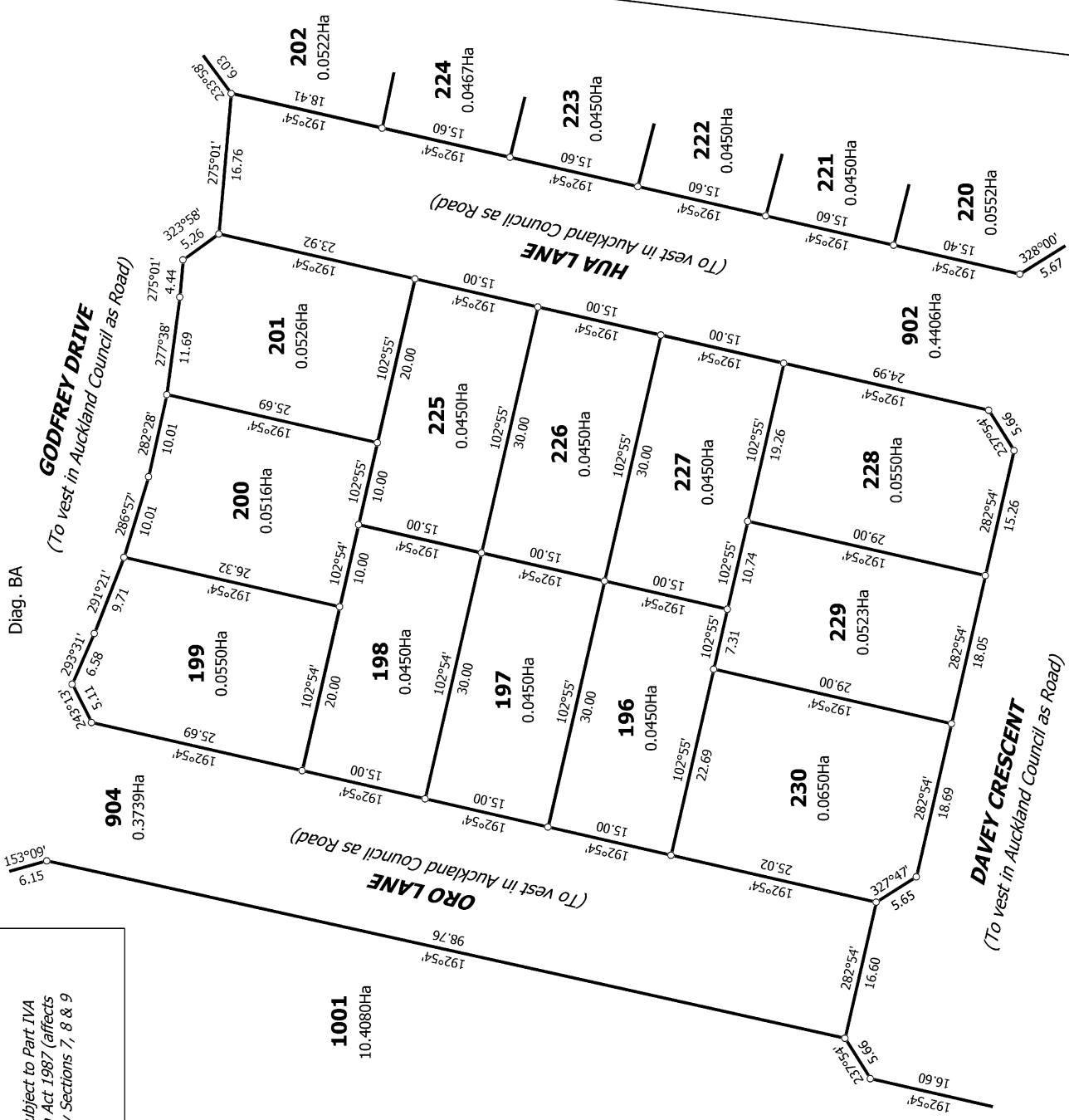


Diag. AC



1001
10.4080Ha

Diag. BA



1001
10.4080Ha

GODFREY DRIVE
(To vest in Auckland Council as Road)

ORO LANE
(To vest in Auckland Council as Road)

HUA LANE
(To vest in Auckland Council as Road)

DAVEY CRESCENT
(To vest in Auckland Council as Road)

T 3/7

All lots are subject to Part IVA Conservation Act 1987 (affects land formerly Sections 7, 8 & 9 SO 70137)

Land District: North Auckland

Digitally Generated Plan
Generated on: 21/10/2019 06:23am Page 7 of 11

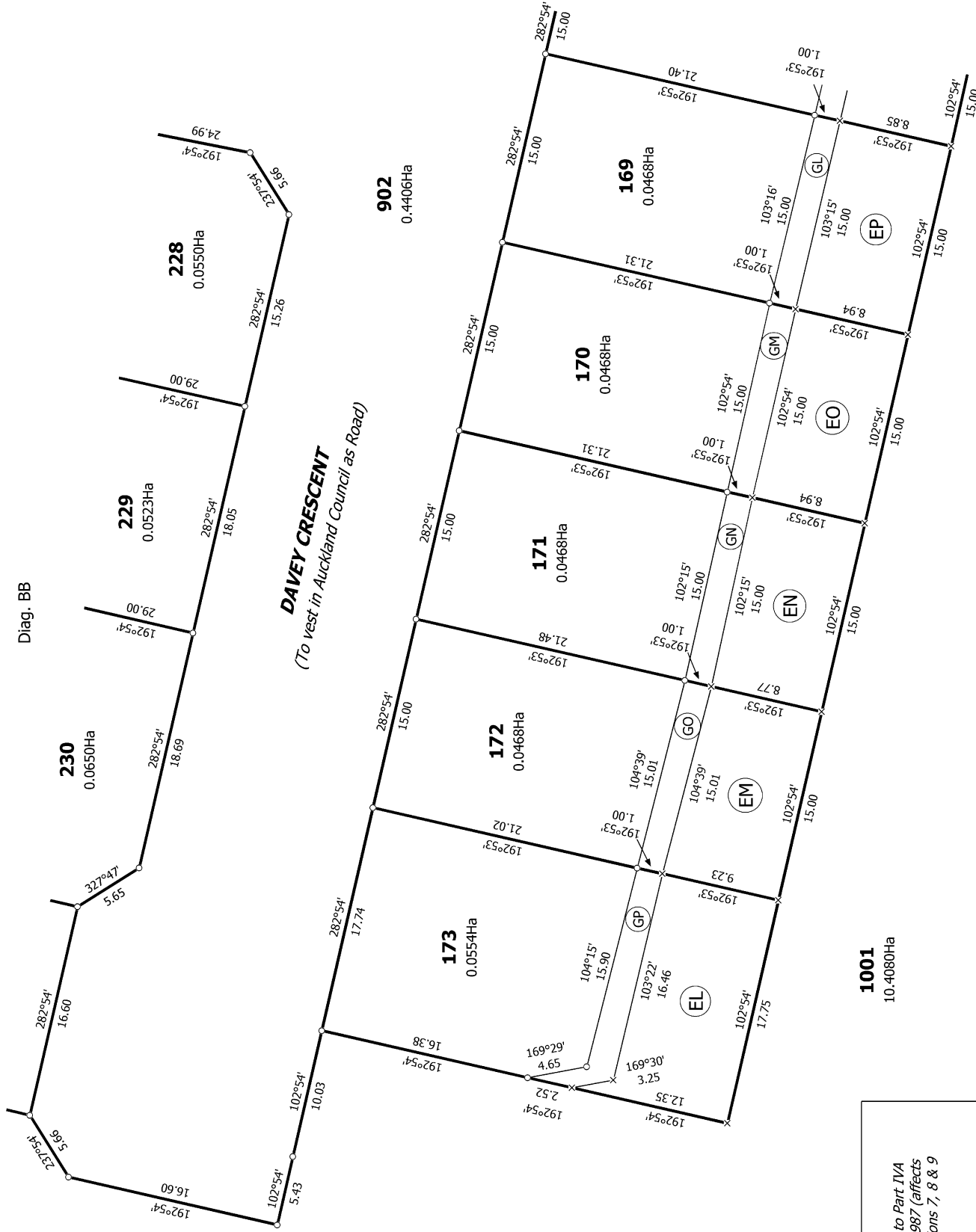
Lots 48-53, 164-173, 196-212, 216-230, 902-904 & 1001 being a Subdivision of Lot 1001 DP 527534

Surveyor: Kendall Lisa Reid
Firm: Wood & Partners Consultants Ltd

Title Plan
LT 534851
Approved on: 21/10/2019



Diag. BB



All lots are subject to Part IVA
 Conservation Act 1987 (affects
 land formerly Sections 7, 8 & 9
 SO 70137)

T 4/7

Land District: North Auckland

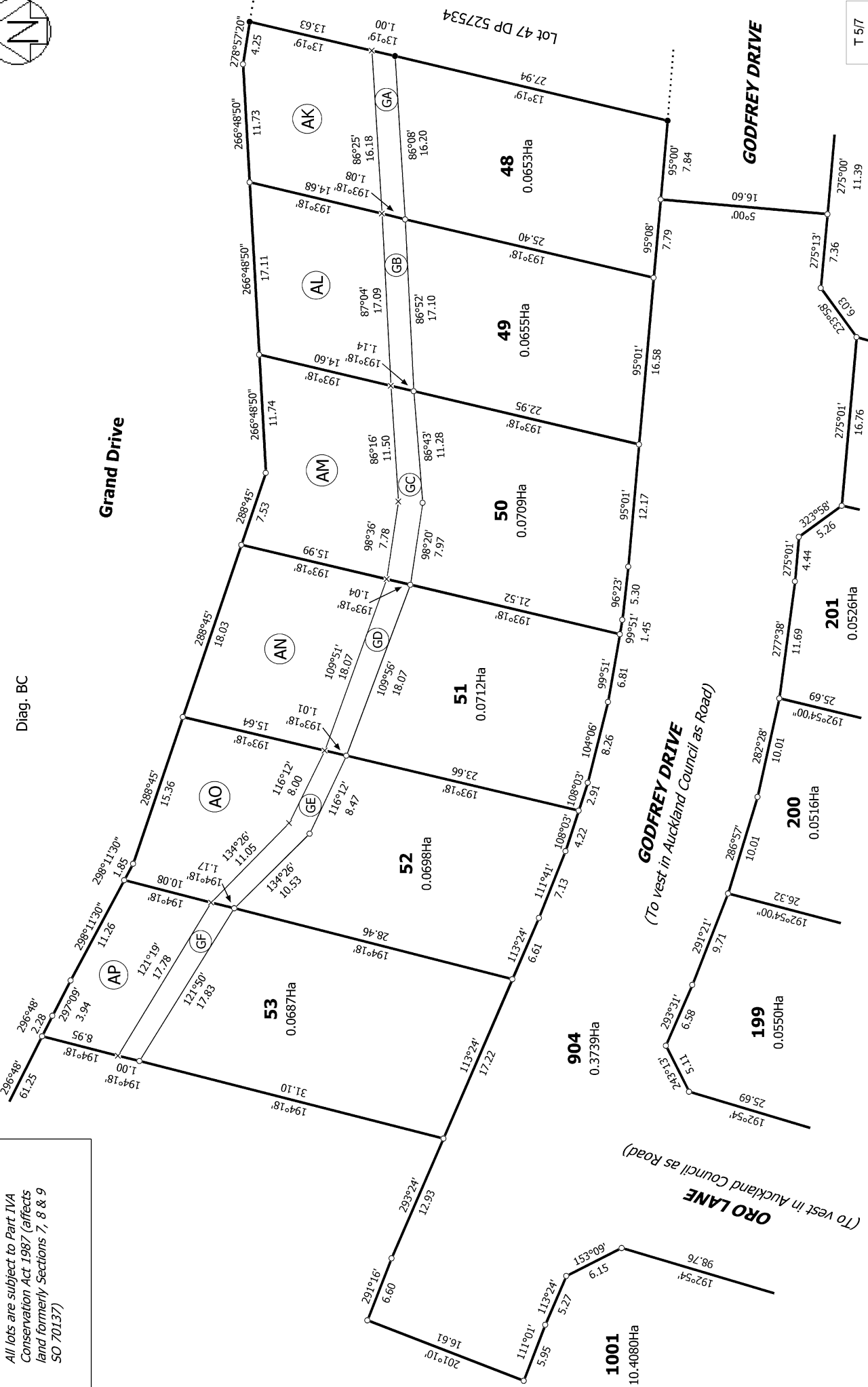
Digitally Generated Plan

Generated on: 21/10/2019 06:23am Page 8 of 11

Lots 48-53, 164-173, 196-212, 216-230, 902-904 & 1001 being a Subdivision of
 Lot 1001 DP 527534

Surveyor: Kendall Lisa Reid
 Firm: Wood & Partners Consultants Ltd

Title Plan
 LT 534851
 Approved on: 21/10/2019



T 5/7

Diag. BC

Grand Drive

GODFREY DRIVE

GODFREY DRIVE
(To vest in Auckland Council as Road)

ORO LANE
(To vest in Auckland Council as Road)

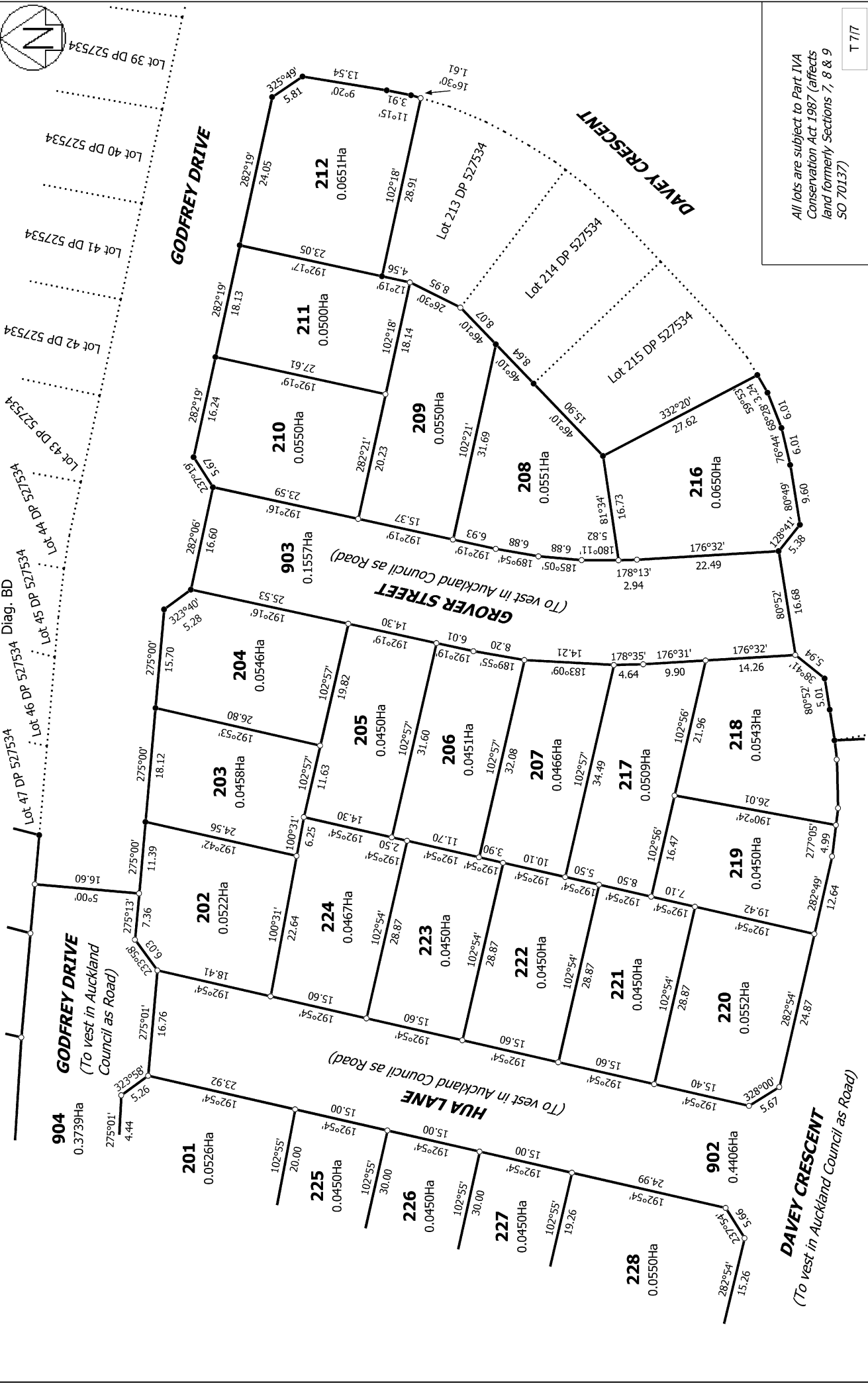
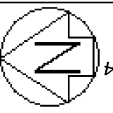
All lots are subject to Part IVA
Conservation Act 1987 (affects
land formerly Sections 7, 8 & 9
SO 70137)

Title Plan
LT 534851
Approved on: 21/10/2019

Surveyor: Kendall Lisa Reid
Firm: Wood & Partners Consultants Ltd

Lots 48-53, 164-173, 196-212, 216-230, 902-904 & 1001 being a Subdivision of
Lot 1001 DP 527534

Land District: North Auckland
Digitally Generated Plan
Generated on: 21/10/2019 06:23:01 Page 9 of 11



All lots are subject to Part IVA Conservation Act 1987 (affects land formerly Sections 7, 8 & 9 SO 70137)

T 717

Land District: North Auckland
 Digitally Generated Plan
 Generated on: 21/10/2019 06:23:00 Page 11 of 11

Surveyor: Kendall Lisa Reid
 Firm: Wood & Partners Consultants Ltd

Title Plan
 LT 534851
 Approved on: 21/10/2019

Lots 48-53, 164-173, 196-212, 216-230, 902-904 & 1001 being a Subdivision of Lot 1001 DP 527534

CSD Plan - LT 534851

Survey Number LT 534851
Surveyor Reference 37504 Arran Hill Precinct 5 Stages 3B and 4
Surveyor Kendall Lisa Reid
Survey Firm Wood & Partners Consultants Ltd
Surveyor Declaration I Kendall Lisa Reid, being a licensed cadastral surveyor, certify that:
 (a) this dataset provided by me and its related survey are accurate, correct and in accordance with the Cadastral Survey Act 2002 and the Rules for Cadastral Survey 2010, and
 (b) the survey was undertaken by me or under my personal direction.
 Declared on 18 Oct 2019 10:55 AM

Survey Details

Dataset Description Lots 48-53, 164-173, 196-212, 216-230, 902-904 & 1001 being a Subdivision of Lot 1001 DP 527534
Purpose LT Subdivision
Status Approved as to Survey **Type** Survey
Land District North Auckland **Survey Class** Class A
Meridional Circuit Mount Eden 2000 **Vertical Datum** None

Survey Dates

Surveyed Date 04/06/2019 **Certified Date** 18/10/2019
Submitted Date 18/10/2019 10:55:46 **Survey Approval Date** 21/10/2019
Deposit Date

Referenced Surveys

Survey Number	Land District	Bearing Correction
DP 320230	North Auckland	0°00'00"
SO 70137	North Auckland	0°00'00"
DP 463561	North Auckland	0°00'00"
DP 522519	North Auckland	0°00'00"
DP 527534	North Auckland	0°00'00"

Territorial Authorities

Auckland Council

Comprised In

RT 850584

Created Parcels

Parcels	Parcel Intent	Area	RT Reference
Lot 50 Deposited Plan 534851	Fee Simple Title	0.0709 Ha	895473
Lot 49 Deposited Plan 534851	Fee Simple Title	0.0655 Ha	895474
Lot 48 Deposited Plan 534851	Fee Simple Title	0.0653 Ha	895475
Lot 196 Deposited Plan 534851	Fee Simple Title	0.0450 Ha	895476
Lot 197 Deposited Plan 534851	Fee Simple Title	0.0450 Ha	895477
Lot 198 Deposited Plan 534851	Fee Simple Title	0.0450 Ha	895478

CSD Plan - LT 534851

Created Parcels

Parcels	Parcel Intent	Area	RT Reference
Lot 199 Deposited Plan 534851	Fee Simple Title	0.0550 Ha	895479
Lot 200 Deposited Plan 534851	Fee Simple Title	0.0516 Ha	895480
Lot 201 Deposited Plan 534851	Fee Simple Title	0.0526 Ha	895481
Lot 225 Deposited Plan 534851	Fee Simple Title	0.0450 Ha	895482
Lot 226 Deposited Plan 534851	Fee Simple Title	0.0450 Ha	895483
Lot 227 Deposited Plan 534851	Fee Simple Title	0.0450 Ha	895484
Lot 228 Deposited Plan 534851	Fee Simple Title	0.0550 Ha	895485
Lot 229 Deposited Plan 534851	Fee Simple Title	0.0523 Ha	895486
Lot 230 Deposited Plan 534851	Fee Simple Title	0.0650 Ha	895487
Lot 202 Deposited Plan 534851	Fee Simple Title	0.0522 Ha	895488
Lot 203 Deposited Plan 534851	Fee Simple Title	0.0458 Ha	895489
Lot 204 Deposited Plan 534851	Fee Simple Title	0.0546 Ha	895490
Lot 205 Deposited Plan 534851	Fee Simple Title	0.0450 Ha	895491
Lot 206 Deposited Plan 534851	Fee Simple Title	0.0451 Ha	895492
Lot 207 Deposited Plan 534851	Fee Simple Title	0.0466 Ha	895493
Lot 217 Deposited Plan 534851	Fee Simple Title	0.0509 Ha	895494
Lot 218 Deposited Plan 534851	Fee Simple Title	0.0543 Ha	895495
Lot 219 Deposited Plan 534851	Fee Simple Title	0.0450 Ha	895496
Lot 220 Deposited Plan 534851	Fee Simple Title	0.0552 Ha	895497
Lot 221 Deposited Plan 534851	Fee Simple Title	0.0450 Ha	895498
Lot 222 Deposited Plan 534851	Fee Simple Title	0.0450 Ha	895499
Lot 223 Deposited Plan 534851	Fee Simple Title	0.0450 Ha	895500
Lot 224 Deposited Plan 534851	Fee Simple Title	0.0467 Ha	895501
Lot 208 Deposited Plan 534851	Fee Simple Title	0.0551 Ha	895502
Lot 209 Deposited Plan 534851	Fee Simple Title	0.0550 Ha	895503
Lot 210 Deposited Plan 534851	Fee Simple Title	0.0550 Ha	895504
Lot 211 Deposited Plan 534851	Fee Simple Title	0.0500 Ha	895505
Lot 212 Deposited Plan 534851	Fee Simple Title	0.0651 Ha	895506
Lot 216 Deposited Plan 534851	Fee Simple Title	0.0650 Ha	895507
Lot 164 Deposited Plan 534851	Fee Simple Title	0.0692 Ha	895508
Lot 165 Deposited Plan 534851	Fee Simple Title	0.0650 Ha	895509
Lot 166 Deposited Plan 534851	Fee Simple Title	0.0469 Ha	895510
Lot 167 Deposited Plan 534851	Fee Simple Title	0.0468 Ha	895511
Lot 168 Deposited Plan 534851	Fee Simple Title	0.0468 Ha	895512
Lot 169 Deposited Plan 534851	Fee Simple Title	0.0468 Ha	895513
Lot 170 Deposited Plan 534851	Fee Simple Title	0.0468 Ha	895514
Lot 171 Deposited Plan 534851	Fee Simple Title	0.0468 Ha	895515
Lot 172 Deposited Plan 534851	Fee Simple Title	0.0468 Ha	895516
Lot 173 Deposited Plan 534851	Fee Simple Title	0.0554 Ha	895517
Lot 903 Deposited Plan 534851	Vesting on Deposit for Road	0.1557 Ha	
Lot 902 Deposited Plan 534851	Vesting on Deposit for Road	0.4406 Ha	
Lot 52 Deposited Plan 534851	Fee Simple Title	0.0698 Ha	895518

CSD Plan - LT 534851

Created Parcels

Parcels	Parcel Intent	Area	RT Reference
Lot 51 Deposited Plan 534851	Fee Simple Title	0.0712 Ha	895519
Area AK Deposited Plan 534851	Covenant - Land		
Area AL Deposited Plan 534851	Covenant - Land		
Area AM Deposited Plan 534851	Covenant - Land		
Area AN Deposited Plan 534851	Covenant - Land		
Area AO Deposited Plan 534851	Covenant - Land		
Area AP Deposited Plan 534851	Covenant - Land		
Area GA Deposited Plan 534851	Covenant - Land		
Area GB Deposited Plan 534851	Covenant - Land		
Area GC Deposited Plan 534851	Covenant - Land		
Area GD Deposited Plan 534851	Covenant - Land		
Area GE Deposited Plan 534851	Covenant - Land		
Area GF Deposited Plan 534851	Covenant - Land		
Area EU Deposited Plan 534851	Covenant - Land		
Area ET Deposited Plan 534851	Covenant - Land		
Area ES Deposited Plan 534851	Covenant - Land		
Area ER Deposited Plan 534851	Covenant - Land		
Area EQ Deposited Plan 534851	Covenant - Land		
Area EP Deposited Plan 534851	Covenant - Land		
Area EO Deposited Plan 534851	Covenant - Land		
Area EN Deposited Plan 534851	Covenant - Land		
Area EM Deposited Plan 534851	Covenant - Land		
Area EL Deposited Plan 534851	Covenant - Land		
Area GG Deposited Plan 534851	Covenant - Land		
Area GH Deposited Plan 534851	Covenant - Land		
Area GI Deposited Plan 534851	Covenant - Land		
Area GJ Deposited Plan 534851	Covenant - Land		
Area GK Deposited Plan 534851	Covenant - Land		
Area GL Deposited Plan 534851	Covenant - Land		
Area GM Deposited Plan 534851	Covenant - Land		
Area GN Deposited Plan 534851	Covenant - Land		
Area GO Deposited Plan 534851	Covenant - Land		
Area GP Deposited Plan 534851	Covenant - Land		
Lot 904 Deposited Plan 534851	Vesting on Deposit for Road	0.3739 Ha	
Lot 53 Deposited Plan 534851	Fee Simple Title	0.0687 Ha	895520
Lot 1001 Deposited Plan 534851	Fee Simple Title	10.4080 Ha	895521
Marginal Strip II Deposited Plan 534851	Marginal Strip - Movable		
Marginal Strip HH Deposited Plan 534851	Marginal Strip - Movable		
Total Area		13.9300 Ha	

Mark and Vector

Survey Number DP 534851

Meridional Circuit Mount Eden 2000

From	To	Code	Bearing	Adpt Surv	Bearing Correction	Distance	Adpt Surv	Class
RM 25 DP 527534	RM 23 DP 527534	ob1	102°21'00" M			82.20 M		
RM 23 DP 527534	ALP 22 DP 527534	ob37	190°58'30" M			57.84 M		
ALP 22 DP 527534	ALP 21 DP 527534	ob40	232°02'00" M			39.71 M		
ALP 21 DP 527534	RM 20 DP 527534	ob43	236°47'00" M			54.39 M		
RM 20 DP 527534	ALP 9 DP 522519	ob15	171°23'00" M			81.60 M		
ALP 9 DP 522519	ALP 8 DP 522519	ob44	170°38'30" A	DP 527534		74.66 A	DP 527534	
RM 25 DP 527534	RM 31 DP 534851	ob2	269°32'00" M			71.15 M		
RM 31 DP 534851	ALP 33 DP 534851	ob395	289°22'10" M			85.41 M		
ALP 33 DP 534851	ALP 34 DP 534851	ob418	189°03'00" M			75.40 M		
ALP 34 DP 534851	ALP 36 DP 534851	ob437	197°11'15" M			53.03 M		
ALP 36 DP 534851	ALP 35 DP 534851	ob452	96°21'15" M			83.50 M		
ALP 35 DP 534851	RM 20 DP 527534	ob475	103°54'20" M			91.43 M		
RM 31 DP 534851	ALP 32 DP 534851	ob396	199°40'00" M			75.00 M		
ALP 32 DP 534851	ALP 35 DP 534851	ob495	179°48'00" M			35.41 M		
RM 25 DP 527534	ALP 37 DP 534851	ob3	193°10'45" M			70.63 M		
ALP 37 DP 534851	RM 20 DP 527534	ob364	171°50'00" M			60.43 M		
ALP 36 DP 534851	ALP 9 DP 522519	ob453	121°18'30" M			215.32 M		
ALP 8 DP 522519	RM 1 DP 522519	ob45	54°10'00" A	DP 522519		121.17 A	DP 522519	
RM 1 DP 522519	IS XA DP 83281	ob47	198°12'50" A	DP 522519		360.95 A	DP 522519	
IS XA DP 83281	IT V SO 70137	ob48	332°01'40" A	DP 522519		655.25 A	DP 522519	
IT V SO 70137	AP IV SO 70137	ob71	6°19'30" A	DP 522519		144.08 A	DP 522519	
AP IV SO 70137	IS III SO 70137	ob49	115°31'00" M			197.58 M		
IS III SO 70137	RM 25 DP 527534	ob51	126°28'00" A	DP 527534		137.87 A	DP 527534	
ALP 36 DP 534851	IS III SO 70137	ob454	20°52'20" M			191.91 M		
ALP 8 DP 522519	PEG 663 DP 522519	ob46	229°16'00" A	DP 522519		22.07 A	DP 522519	

Mark and Vector

Survey Number DP 534851

Meridional Circuit Mount Eden 2000

From	To	Code	Bearing	Adpt Surv	Bearing Correction	Distance	Adpt Surv	Class
PEG 663 DP 522519	PEG 662 DP 522519	ob63	344°29'00"	A DP 522519		18.10 A	DP 522519	Class A
PEG 662 DP 522519	PEG 661 DP 522519	ob64	21°25'00"	A DP 522519		7.21 A	DP 522519	Class A
PEG 661 DP 522519	PEG 660 DP 522519	ob65	328°21'00"	A DP 522519		5.12 A	DP 522519	Class A
PEG 660 DP 522519	PEG 659 DP 522519	ob66	336°20'00"	A DP 522519		9.53 A	DP 522519	Class A
PEG 659 DP 522519	PEG 658 DP 522519	ob67	344°20'00"	A DP 522519		9.55 A	DP 522519	Class A
PEG 658 DP 522519	PEG 657 DP 522519	ob68	352°26'00"	A DP 522519		2.08 A	DP 522519	Class A
PEG 657 DP 522519	PEG 656 DP 522519	ob69	351°40'00"	A DP 522519		2.37 A	DP 522519	Class A
PEG 656 DP 522519	PEG 655 DP 522519	ob70	353°14'00"	A DP 522519		5.28 A	DP 522519	Class A
PEG 655 DP 522519	PEG 654 DP 522519	ob72	356°31'00"	A DP 522519		20.21 A	DP 522519	Class A
PEG 654 DP 522519	PEG 653 DP 522519	ob73	316°55'00"	A DP 522519		6.13 A	DP 522519	Class A
PEG 653 DP 522519	PEG 652 DP 522519	ob74	270°50'00"	A DP 522519		7.25 A	DP 522519	Class A
PEG 652 DP 522519	ALP 9 DP 522519	ob75	76°21'00"	A DP 522519		30.65 A	DP 522519	
PEG 652 DP 522519	PEG 651 DP 522519	ob76	359°38'00"	A DP 522519		16.43 A	DP 522519	Class A
PEG 651 DP 522519	PEG 650 DP 522519	ob77	89°38'00"	A DP 522519		6.38 A	DP 522519	Class A
PEG 650 DP 522519	PEG 648 DP 522519	ob78	47°08'00"	A DP 522519		5.00 A	DP 522519	Class A
PEG 648 DP 522519	PEG 291 DP 534851	ob79	356°31'00"	A DP 522519		33.93 C		Class A
PEG 291 DP 534851	PEG 28 DP 534851	ob158	356°31'00"	A DP 522519		0.39 C		Class A
PEG 28 DP 534851	PEG 647 DP 522519	ob80	356°31'00"	A DP 527534		8.41 C		Class A
PEG 165 DP 527534	RM 20 DP 527534	ob81	65°18'00"	M		12.58 M		
PEG 165 DP 527534	PEG 166 DP 527534	ob82	308°41'00"	A DP 527534		5.37 A	DP 527534	Class A
PEG 166 DP 527534	PEG 167 DP 527534	ob83	260°52'00"	A DP 527534		8.32 A	DP 527534	Class A
PEG 167 DP 527534	PEG 168 DP 527534	ob84	350°52'00"	A DP 527534		16.60 A	DP 527534	Class A
PEG 168 DP 527534	PEG 169 DP 527534	ob86	80°52'00"	A DP 527534		4.93 A	DP 527534	Class A
PEG 169 DP 527534	PEG 170 DP 527534	ob88	80°52'00"	A DP 527534		5.01 A	DP 527534	Class A

Mark and Vector

Survey Number DP 534851

Meridional Circuit Mount Eden 2000

From	To	Code	Bearing	Adpt Surv	Bearing Correction	Distance	Adpt Surv	Class
PEG 170 DP 527534	PEG 507 DP 534851	ob89	38°41'00"	A DP 527534		5.94 A	DP 527534	Class A
PEG 507 DP 534851	PEG 172 DP 527534	ob90	80°52'00"	A DP 527534		16.68 A	DP 527534	Class A
PEG 172 DP 527534	PEG 173 DP 527534	ob91	128°41'00"	A DP 527534		5.38 A	DP 527534	Class A
PEG 173 DP 527534	PEG 174 DP 527534	ob92	80°49'00"	A DP 527534		9.60 A	DP 527534	Class A
PEG 174 DP 527534	PEG 175 DP 527534	ob93	76°44'00"	A DP 527534		6.01 A	DP 527534	Class A
PEG 175 DP 527534	ALP 21 DP 527534	ob94	69°54'00"	A DP 527534		23.90 A	DP 527534	
PEG 175 DP 527534	PEG 176 DP 527534	ob95	68°28'00"	A DP 527534		6.01 A	DP 527534	Class A
PEG 176 DP 527534	PEG 177 DP 527534	ob96	59°53'00"	A DP 527534		3.24 A	DP 527534	Class A
PEG 177 DP 527534	PEG 219 DP 527534	ob97	332°20'00"	A DP 527534		27.62 A	DP 527534	Class A
PEG 219 DP 527534	PEG 220 DP 527534	ob98	46°10'00"	A DP 527534		15.90 A	DP 527534	Class A
PEG 220 DP 527534	PEG 221 DP 527534	ob99	46°10'00"	A DP 527534		8.64 A	DP 527534	Class A
PEG 221 DP 527534	PEG 510 DP 534851	ob100	46°10'00"	A DP 527534		8.07 A	DP 527534	Class A
PEG 510 DP 534851	PEG 511 DP 534851	ob101	26°30'00"	A DP 527534		8.95 A	DP 527534	Class A
PEG 511 DP 534851	PEG 224 DP 527534	ob102	12°19'00"	A DP 527534		4.56 A	DP 527534	Class A
PEG 224 DP 527534	PEG 506 DP 534851	ob103	102°18'00"	A DP 527534		28.91 A	DP 527534	Class A
PEG 506 DP 534851	ALP 22 DP 527534	ob104	176°37'00"	M		24.58 M		
PEG 506 DP 534851	PEG 190 DP 527534	ob105	16°30'00"	A DP 527534		1.61 A	DP 527534	Class A
PEG 190 DP 527534	PEG 191 DP 527534	ob106	11°15'00"	A DP 527534		3.91 A	DP 527534	Class A
PEG 191 DP 527534	PEG 192 DP 527534	ob107	9°20'00"	A DP 527534		13.54 A	DP 527534	Class A
PEG 192 DP 527534	PEG 193 DP 527534	ob108	325°49'00"	A DP 527534		5.81 A	DP 527534	Class A
PEG 193 DP 527534	RM 23 DP 527534	ob110	54°45'00"	M		15.07 M		
PEG 193 DP 527534	PEG 194 DP 527534	ob111	282°19'00"	A DP 527534		24.05 A	DP 527534	Class A
PEG 194 DP 527534	PEG 195 DP 527534	ob112	282°19'00"	A DP 527534		18.13 A	DP 527534	Class A
PEG 195 DP 527534	PEG 196 DP 527534	ob114	282°19'00"	A DP 527534		16.24 A	DP 527534	Class A

Mark and Vector

Survey Number DP 534851

Meridional Circuit Mount Eden 2000

From	To	Code	Bearing	Adpt Surv	Bearing Correction	Distance	Adpt Surv	Class
PEG 196 DP 527534	PEG 197 DP 527534	ob109	237°19'00"	A DP 527534		5.67 A	DP 527534	Class A
PEG 197 DP 527534	PEG 198 DP 527534	ob116	282°06'00"	A DP 527534		16.60 A	DP 527534	Class A
PEG 198 DP 527534	PEG 199 DP 527534	ob118	323°40'00"	A DP 527534		5.28 A	DP 527534	Class A
PEG 199 DP 527534	PEG 200 DP 527534	ob120	275°00'00"	A DP 527534		15.70 A	DP 527534	Class A
PEG 200 DP 527534	PEG 201 DP 527534	ob121	275°00'00"	A DP 527534		18.12 A	DP 527534	Class A
PEG 201 DP 527534	PEG 509 DP 534851	ob123	275°00'00"	A DP 527534		11.39 A	DP 527534	Class A
PEG 509 DP 534851	PEG 508 DP 534851	ob125	5°00'00"	A DP 527534		16.60 A	DP 527534	Class A
PEG 508 DP 534851	RM 25 DP 527534	ob127	101°17'00"	A DP 527534		57.92 A	DP 527534	
PEG 508 DP 534851	PEG 205 DP 527534	ob128	95°00'00"	A DP 527534		7.84 A	DP 527534	Class A
PEG 205 DP 527534	PEG 238 DP 527534	ob129	13°19'00"	A DP 527534		27.94 A	DP 527534	Class A
PEG 238 DP 527534	UNMK 210 DP 527534	ob130	13°19'00"	A DP 527534		1.00 A	DP 527534	Class A
UNMK 210 DP 527534	PEG 79 DP 527534	ob131	13°19'00"	A DP 527534		13.63 A	DP 527534	Class A
PEG 79 DP 527534	PEG 505 DP 534851	ob132	278°57'20"	A SO 70137		4.25 A	DP 527534	Class A
PEG 505 DP 534851	PEG 292 DP 534851	ob133	266°48'50"	A SO 70137		11.73 C		Class A
PEG 292 DP 534851	PEG 293 DP 534851	ob159	266°48'50"	A SO 70137		17.11 C		Class A
PEG 293 DP 534851	PEG 504 DP 534851	ob161	266°48'50"	A SO 70137		11.74 C		Class A
PEG 504 DP 534851	PEG 294 DP 534851	ob134	288°45'00"	A SO 70137		7.53 C		Class A
PEG 294 DP 534851	PEG 295 DP 534851	ob163	288°45'00"	A SO 70137		18.03 C		Class A
PEG 295 DP 534851	PEG 502 DP 534851	ob165	288°45'00"	A SO 70137		15.36 C		Class A
PEG 502 DP 534851	PEG 296 DP 534851	ob135	298°11'30"	A SO 70137		1.85 C		Class A
PEG 296 DP 534851	PEG 501 DP 534851	ob167	298°11'30"	A SO 70137		11.26 C		Class A
PEG 501 DP 534851	PEG 500 DP 534851	ob136	297°09'00"	A SO 70137		3.94 A	SO 70137	Class A
PEG 500 DP 534851	PEG 297 DP 534851	ob137	296°48'00"	A SO 70137		2.28 C		Class A
PEG 297 DP 534851	PEG (4) SO 70137	ob169	296°48'00"	A SO 70137		61.25 C		Class A

Mark and Vector

Survey Number DP 534851

Meridional Circuit Mount Eden 2000

From	To	Code	Bearing	Adpt Surv	Bearing Correction	Distance	Adpt Surv	Class
PEG (4) SO 70137	AP IV SO 70137	ob138	305°10'30"	A SO 70137		115.94 A	SO 70137	
PEG (4) SO 70137	PEG (1) SO 70137	ob139	296°48'00"	A SO 70137		21.30 A	SO 70137	Class A
PEG (1) SO 70137	DISK (13) SO 70137	ob140	296°48'00"	A SO 70137		7.75 A	SO 70137	Class A
DISK (13) SO 70137	DISK (5) SO 70137	ob141	296°26'30"	A SO 70137		39.39 A	SO 70137	Class A
DISK (5) SO 70137	DISK (17) SO 70137	ob142	257°25'30"	A SO 70137		46.62 A	SO 70137	Class A
DISK (17) SO 70137	DISK (16) SO 70137	ob143	225°44'00"	A SO 70137		27.56 A	SO 70137	Class A
DISK (16) SO 70137	PEG (2) SO 70137	ob144	162°11'30"	A SO 70137		36.65 A	SO 70137	Class A
PEG (2) SO 70137	DISK (4) SO 70137	ob145	162°11'30"	A SO 70137		27.28 A	SO 70137	Class A
DISK (4) SO 70137	DISK (6) SO 70137	ob146	206°20'00"	A SO 70137		18.04 A	SO 70137	Class A
DISK (6) SO 70137	DISK (15) SO 70137	ob147	228°51'00"	A SO 70137		29.82 A	SO 70137	Class A
DISK (15) SO 70137	DISK (18) SO 70137	ob148	232°24'30"	A SO 70137		33.42 A	SO 70137	Class A
DISK (18) SO 70137	DISK (3) SO 70137	ob149	202°09'40"	A SO 70137		23.01 A	SO 70137	Class A
DISK (3) SO 70137	DISK (19) SO 70137	ob150	192°38'00"	A SO 70137		36.37 A	SO 70137	Class A
DISK (19) SO 70137	DISK (12) SO 70137	ob151	192°26'30"	A SO 70137		82.13 A	SO 70137	Class A
DISK (12) SO 70137	DISK (11) SO 70137	ob152	194°11'00"	A SO 70137		3.91 A	SO 70137	Class A
DISK (11) SO 70137	DISK (1) SO 70137	ob153	192°19'10"	A SO 70137		67.22 A	SO 70137	Class A
DISK (1) SO 70137	DISK (8) SO 70137	ob154	139°14'40"	A SO 70137		13.90 A	SO 70137	Class A
DISK (8) SO 70137	PEG (7) SO 70137	ob155	215°41'00"	A SO 70137		4.29 A	SO 70137	Class A
PEG (7) SO 70137	UNMK 158 SO 70137	ob156	215°41'00"	A SO 70137		8.30 A	SO 70137	Class A
UNMK 23 DP 320230	PEG 663 DP 522519	ob157	340°10'00"	A DP 522519		40.07 A	DP 522519	Class A
PEG 297 DP 534851	UNMK 417 DP 534851	ob170	194°18'00"	C		8.95 C		Class A
UNMK 417 DP 534851	PEG 418 DP 534851	ob533	194°18'00"	C		1.00 C		Class A
PEG 418 DP 534851	PEG 307 DP 534851	ob535	194°18'00"	C		31.10 C		Class A
PEG 307 DP 534851	PEG 301 DP 534851	ob542	293°24'00"	C		12.93 C		Class A

Mark and Vector

Survey Number DP 534851

Meridional Circuit Mount Eden 2000

From	To	Code	Bearing	Adpt Surv	Bearing Correction	Distance	Adpt Surv	Class
PEG 301 DP 534851	PEG 302 DP 534851	ob171	291°16'00"	C		6.60 C		Class A
PEG 302 DP 534851	PEG 303 DP 534851	ob172	201°10'00"	C		16.61 C		Class A
PEG 303 DP 534851	PEG 304 DP 534851	ob173	111°01'00"	C		5.95 C		Class A
PEG 304 DP 534851	PEG 305 DP 534851	ob174	113°24'00"	C		5.27 C		Class A
PEG 305 DP 534851	PEG 306 DP 534851	ob175	153°09'00"	C		6.15 C		Class A
PEG 306 DP 534851	PEG 308 DP 534851	ob176	192°54'00"	C		98.76 C		Class A
PEG 308 DP 534851	PEG 309 DP 534851	ob177	237°54'00"	C		5.66 C		Class A
PEG 309 DP 534851	PEG 310 DP 534851	ob178	192°54'00"	C		16.60 C		Class A
PEG 310 DP 534851	PEG 471 DP 534851	ob511	102°54'00"	C		5.43 C		Class A
PEG 471 DP 534851	PEG 482 DP 534851	ob512	102°54'00"	C		10.03 C		Class A
PEG 482 DP 534851	PEG 312 DP 534851	ob363	192°54'00"	C		16.38 C		Class A
PEG 312 DP 534851	UNMK 313 DP 534851	ob179	192°54'00"	C		2.52 C		Class A
UNMK 313 DP 534851	UNMK 314 DP 534851	ob181	192°54'00"	C		12.35 C		Class A
UNMK 314 DP 534851	UNMK 315 DP 534851	ob183	102°54'00"	C		17.75 C		Class A
UNMK 315 DP 534851	UNMK 316 DP 534851	ob184	102°54'00"	C		15.00 C		Class A
UNMK 316 DP 534851	UNMK 317 DP 534851	ob185	102°54'00"	C		15.00 C		Class A
UNMK 317 DP 534851	UNMK 318 DP 534851	ob186	102°54'00"	C		15.00 C		Class A
UNMK 318 DP 534851	UNMK 319 DP 534851	ob187	102°54'00"	C		15.00 C		Class A
UNMK 319 DP 534851	UNMK 320 DP 534851	ob188	102°54'00"	C		15.00 C		Class A
UNMK 320 DP 534851	UNMK 321 DP 534851	ob189	102°54'00"	C		15.00 C		Class A
UNMK 321 DP 534851	UNMK 322 DP 534851	ob190	102°54'00"	C		15.00 C		Class A
UNMK 322 DP 534851	UNMK 323 DP 534851	ob191	102°54'00"	C		15.00 C		Class A
UNMK 323 DP 534851	UNMK 324 DP 534851	ob192	87°06'00"	C		10.29 C		Class A
UNMK 324 DP 534851	UNMK 481 DP 534851	ob193	85°38'00"	C		19.39 C		Class A

Mark and Vector

Survey Number DP 534851

Meridional Circuit Mount Eden 2000

From	To	Code	Bearing	Adpt Surv	Bearing Correction	Distance	Adpt Surv	Class
UNMK 481 DP 534851	PEG 291 DP 534851	ob541	85°38'00"	C		2.12 C		Class A
PEG 197 DP 527534	PEG 327 DP 534851	ob117	192°16'00"	C		23.59 C		Class A
PEG 327 DP 534851	PEG 328 DP 534851	ob194	192°19'00"	C		15.37 C		Class A
PEG 328 DP 534851	PEG 329 DP 534851	ob195	192°19'00"	C		6.93 C		Class A
PEG 329 DP 534851	PEG 330 DP 534851	ob197	189°54'00"	C		6.88 C		Class A
PEG 330 DP 534851	PEG 331 DP 534851	ob198	185°05'00"	C		6.88 C		Class A
PEG 331 DP 534851	PEG 332 DP 534851	ob199	180°11'00"	C		5.82 C		Class A
PEG 332 DP 534851	PEG 334 DP 534851	ob200	178°13'00"	C		2.94 C		Class A
PEG 334 DP 534851	PEG 172 DP 527534	ob202	176°32'00"	C		22.49 C		Class A
PEG 509 DP 534851	PEG 335 DP 534851	ob126	275°13'00"	C		7.36 C		Class A
PEG 335 DP 534851	PEG 336 DP 534851	ob203	233°58'00"	C		6.03 C		Class A
PEG 336 DP 534851	PEG 337 DP 534851	ob204	275°01'00"	C		16.76 C		Class A
PEG 337 DP 534851	PEG 338 DP 534851	ob206	323°58'00"	C		5.26 C		Class A
PEG 338 DP 534851	PEG 339 DP 534851	ob208	275°01'00"	C		4.44 C		Class A
PEG 339 DP 534851	PEG 340 DP 534851	ob209	277°38'00"	C		11.69 C		Class A
PEG 340 DP 534851	PEG 341 DP 534851	ob210	282°28'00"	C		10.01 C		Class A
PEG 341 DP 534851	PEG 342 DP 534851	ob212	286°57'00"	C		10.01 C		Class A
PEG 342 DP 534851	PEG 343 DP 534851	ob213	291°21'00"	C		9.71 C		Class A
PEG 343 DP 534851	PEG 344 DP 534851	ob215	293°31'00"	C		6.58 C		Class A
PEG 344 DP 534851	PEG 345 DP 534851	ob216	243°13'00"	C		5.11 C		Class A
PEG 345 DP 534851	PEG 346 DP 534851	ob217	192°54'00"	C		25.69 C		Class A
PEG 346 DP 534851	PEG 347 DP 534851	ob218	192°54'00"	C		15.00 C		Class A
PEG 347 DP 534851	PEG 348 DP 534851	ob220	192°54'00"	C		15.00 C		Class A
PEG 348 DP 534851	PEG 349 DP 534851	ob222	192°54'00"	C		15.00 C		Class A

Mark and Vector

Survey Number DP 534851

Meridional Circuit Mount Eden 2000

From	To	Code	Bearing	Adpt Surv	Bearing Correction	Distance	Adpt Surv	Class
PEG 349 DP 534851	PEG 350 DP 534851	ob224	192°54'00"	C		25.02 C		Class A
PEG 350 DP 534851	PEG 308 DP 534851	ob226	282°54'00"	C		16.60 C		Class A
PEG 336 DP 534851	PEG 351 DP 534851	ob205	192°54'00"	C		18.41 C		Class A
PEG 351 DP 534851	PEG 352 DP 534851	ob227	192°54'00"	C		15.60 C		Class A
PEG 352 DP 534851	PEG 353 DP 534851	ob229	192°54'00"	C		15.60 C		Class A
PEG 353 DP 534851	PEG 354 DP 534851	ob231	192°54'00"	C		15.60 C		Class A
PEG 354 DP 534851	PEG 355 DP 534851	ob233	192°54'00"	C		15.60 C		Class A
PEG 355 DP 534851	PEG 356 DP 534851	ob235	192°54'00"	C		15.40 C		Class A
PEG 356 DP 534851	PEG 357 DP 534851	ob237	282°54'00"	C		16.60 C		
PEG 357 DP 534851	PEG 358 DP 534851	ob238	237°54'00"	C		5.66 C		Class A
PEG 358 DP 534851	PEG 359 DP 534851	ob239	282°54'00"	C		15.26 C		Class A
PEG 359 DP 534851	PEG 360 DP 534851	ob240	282°54'00"	C		18.05 C		Class A
PEG 360 DP 534851	PEG 361 DP 534851	ob241	282°54'00"	C		18.69 C		Class A
PEG 361 DP 534851	PEG 350 DP 534851	ob242	327°47'00"	C		5.65 C		Class A
PEG 167 DP 527534	PEG 362 DP 534851	ob85	263°15'00"	C		4.51 C		Class A
PEG 362 DP 534851	PEG 363 DP 534851	ob243	267°40'00"	C		5.26 C		Class A
PEG 363 DP 534851	PEG 364 DP 534851	ob244	267°40'00"	C		1.91 C		Class A
PEG 364 DP 534851	PEG 366 DP 534851	ob246	273°41'00"	C		7.17 C		Class A
PEG 366 DP 534851	PEG 367 DP 534851	ob247	279°48'00"	C		6.51 C		Class A
PEG 367 DP 534851	PEG 370 DP 534851	ob248	282°42'00"	C		15.01 C		Class A
PEG 370 DP 534851	PEG 371 DP 534851	ob250	282°54'00"	C		15.00 C		Class A
PEG 371 DP 534851	PEG 372 DP 534851	ob252	282°54'00"	C		15.00 C		Class A
PEG 372 DP 534851	PEG 373 DP 534851	ob254	282°54'00"	C		15.00 C		Class A
PEG 373 DP 534851	PEG 374 DP 534851	ob256	282°54'00"	C		15.00 C		Class A

Mark and Vector

Survey Number DP 534851

Meridional Circuit Mount Eden 2000

From	To	Code	Bearing	Adpt Surv	Bearing Correction	Distance	Adpt Surv	Class
PEG 374 DP 534851	PEG 375 DP 534851	ob258	282°54'00"	C		15.00 C		Class A
PEG 375 DP 534851	PEG 376 DP 534851	ob260	282°54'00"	C		15.00 C		Class A
PEG 376 DP 534851	PEG 482 DP 534851	ob262	282°54'00"	C		17.74 C		Class A
PEG 168 DP 527534	PEG 377 DP 534851	ob87	263°18'00"	C		3.07 C		Class A
PEG 377 DP 534851	PEG 378 DP 534851	ob264	268°33'00"	C		7.70 C		Class A
PEG 378 DP 534851	PEG 379 DP 534851	ob265	277°05'00"	C		2.71 C		Class A
PEG 379 DP 534851	PEG 380 DP 534851	ob266	277°05'00"	C		4.99 C		Class A
PEG 380 DP 534851	PEG 381 DP 534851	ob267	282°49'00"	C		12.64 C		Class A
PEG 381 DP 534851	PEG 382 DP 534851	ob268	282°54'00"	C		24.87 C		Class A
PEG 382 DP 534851	PEG 356 DP 534851	ob269	328°00'00"	C		5.67 C		Class A
PEG 198 DP 527534	PEG 383 DP 534851	ob119	192°16'00"	C		25.53 C		Class A
PEG 383 DP 534851	PEG 384 DP 534851	ob270	192°19'00"	C		14.30 C		Class A
PEG 384 DP 534851	PEG 385 DP 534851	ob271	192°19'00"	C		6.01 C		Class A
PEG 385 DP 534851	PEG 386 DP 534851	ob272	189°55'00"	C		8.20 C		Class A
PEG 386 DP 534851	PEG 387 DP 534851	ob273	183°09'00"	C		14.21 C		Class A
PEG 387 DP 534851	PEG 388 DP 534851	ob274	178°35'00"	C		4.64 C		Class A
PEG 388 DP 534851	PEG 389 DP 534851	ob275	176°31'00"	C		9.90 C		Class A
PEG 389 DP 534851	PEG 507 DP 534851	ob276	176°32'00"	C		14.26 C		Class A
PEG 337 DP 534851	PEG 390 DP 534851	ob207	192°54'00"	C		23.92 C		Class A
PEG 390 DP 534851	PEG 391 DP 534851	ob277	192°54'00"	C		15.00 C		Class A
PEG 391 DP 534851	PEG 392 DP 534851	ob278	192°54'00"	C		15.00 C		Class A
PEG 392 DP 534851	PEG 393 DP 534851	ob279	192°54'00"	C		15.00 C		Class A
PEG 393 DP 534851	PEG 357 DP 534851	ob280	192°54'00"	C		24.99 C		Class A
PEG 307 DP 534851	PEG 396 DP 534851	ob543	113°24'00"	C		17.22 C		Class A

Mark and Vector

Survey Number DP 534851

Meridional Circuit Mount Eden 2000

From	To	Code	Bearing	Adpt Surv	Bearing Correction	Distance	Adpt Surv	Class
PEG 396 DP 534851	PEG 397 DP 534851	ob281	113°24'00"	C		6.61 C		Class A
PEG 397 DP 534851	PEG 398 DP 534851	ob282	111°41'00"	C		7.13 C		Class A
PEG 398 DP 534851	PEG 399 DP 534851	ob283	108°03'00"	C		4.22 C		Class A
PEG 399 DP 534851	PEG 400 DP 534851	ob284	108°03'00"	C		2.91 C		Class A
PEG 400 DP 534851	PEG 401 DP 534851	ob285	104°06'00"	C		8.26 C		Class A
PEG 401 DP 534851	PEG 402 DP 534851	ob286	99°51'00"	C		6.81 C		Class A
PEG 402 DP 534851	PEG 403 DP 534851	ob287	99°51'00"	C		1.45 C		Class A
PEG 403 DP 534851	PEG 404 DP 534851	ob288	96°23'00"	C		5.30 C		Class A
PEG 404 DP 534851	PEG 405 DP 534851	ob289	95°01'00"	C		12.17 C		Class A
PEG 405 DP 534851	PEG 406 DP 534851	ob290	95°01'00"	C		16.58 C		Class A
PEG 406 DP 534851	PEG 508 DP 534851	ob291	95°08'00"	C		7.79 C		Class A
PEG 342 DP 534851	PEG 419 DP 534851	ob214	192°54'00"	C		26.32 C		Class A
PEG 419 DP 534851	PEG 420 DP 534851	ob292	102°54'00"	C		10.00 C		Class A
PEG 420 DP 534851	PEG 421 DP 534851	ob293	192°54'00"	C		15.00 C		Class A
PEG 421 DP 534851	PEG 422 DP 534851	ob295	192°54'00"	C		15.00 C		Class A
PEG 422 DP 534851	PEG 423 DP 534851	ob297	192°54'00"	C		15.00 C		Class A
PEG 423 DP 534851	PEG 424 DP 534851	ob299	102°55'00"	C		10.74 C		Class A
PEG 424 DP 534851	PEG 359 DP 534851	ob300	192°54'00"	C		29.00 C		Class A
PEG 420 DP 534851	PEG 425 DP 534851	ob294	102°55'00"	C		10.00 C		Class A
PEG 425 DP 534851	PEG 390 DP 534851	ob302	102°55'00"	C		20.00 C		Class A
PEG 340 DP 534851	PEG 425 DP 534851	ob211	192°54'00"	C		25.69 C		Class A
PEG 421 DP 534851	PEG 391 DP 534851	ob296	102°55'00"	C		30.00 C		Class A
PEG 422 DP 534851	PEG 392 DP 534851	ob298	102°55'00"	C		30.00 C		Class A
PEG 424 DP 534851	PEG 393 DP 534851	ob301	102°55'00"	C		19.26 C		Class A

Mark and Vector

Survey Number DP 534851

Meridional Circuit Mount Eden 2000

From	To	Code	Bearing	Adpt Surv	Bearing Correction	Distance	Adpt Surv	Class
PEG 346 DP 534851	PEG 419 DP 534851	ob219	102°54'00"	C		20.00 C		Class A
PEG 347 DP 534851	PEG 421 DP 534851	ob221	102°54'00"	C		30.00 C		Class A
PEG 348 DP 534851	PEG 422 DP 534851	ob223	102°55'00"	C		30.00 C		Class A
PEG 349 DP 534851	PEG 426 DP 534851	ob225	102°55'00"	C		22.69 C		Class A
PEG 426 DP 534851	PEG 423 DP 534851	ob303	102°55'00"	C		7.31 C		Class A
PEG 426 DP 534851	PEG 360 DP 534851	ob304	192°54'00"	C		29.00 C		Class A
PEG 376 DP 534851	PEG 427 DP 534851	ob263	192°53'00"	C		21.02 C		Class A
PEG 427 DP 534851	UNMK 428 DP 534851	ob305	192°53'00"	C		1.00 C		Class A
UNMK 428 DP 534851	UNMK 315 DP 534851	ob307	192°53'00"	C		9.23 C		Class A
PEG 375 DP 534851	PEG 429 DP 534851	ob261	192°53'00"	C		21.48 C		Class A
PEG 429 DP 534851	UNMK 430 DP 534851	ob309	192°53'00"	C		1.00 C		Class A
UNMK 430 DP 534851	UNMK 316 DP 534851	ob311	192°53'00"	C		8.77 C		Class A
PEG 374 DP 534851	PEG 431 DP 534851	ob259	192°53'00"	C		21.31 C		Class A
PEG 431 DP 534851	UNMK 432 DP 534851	ob313	192°53'00"	C		1.00 C		Class A
UNMK 432 DP 534851	UNMK 317 DP 534851	ob315	192°53'00"	C		8.94 C		Class A
PEG 373 DP 534851	PEG 433 DP 534851	ob257	192°53'00"	C		21.31 C		Class A
PEG 433 DP 534851	UNMK 434 DP 534851	ob317	192°53'00"	C		1.00 C		Class A
UNMK 434 DP 534851	UNMK 318 DP 534851	ob319	192°53'00"	C		8.94 C		Class A
PEG 372 DP 534851	PEG 435 DP 534851	ob255	192°53'00"	C		21.40 C		Class A
PEG 435 DP 534851	UNMK 436 DP 534851	ob321	192°53'00"	C		1.00 C		Class A
UNMK 436 DP 534851	UNMK 319 DP 534851	ob323	192°53'00"	C		8.85 C		Class A
PEG 371 DP 534851	PEG 437 DP 534851	ob253	192°53'00"	C		21.50 C		Class A
PEG 437 DP 534851	UNMK 438 DP 534851	ob325	192°53'00"	C		1.00 C		Class A
UNMK 438 DP 534851	UNMK 320 DP 534851	ob327	192°53'00"	C		8.75 C		Class A

Mark and Vector

Survey Number DP 534851

Meridional Circuit Mount Eden 2000

From	To	Code	Bearing	Adpt Surv	Bearing Correction	Distance	Adpt Surv	Class
PEG 370 DP 534851	PEG 439 DP 534851	ob251	192°53'00"	C		21.59 C		Class A
PEG 439 DP 534851	UNMK 440 DP 534851	ob329	192°53'00"	C		1.00 C		Class A
UNMK 440 DP 534851	UNMK 321 DP 534851	ob331	192°53'00"	C		8.66 C		Class A
PEG 367 DP 534851	PEG 441 DP 534851	ob249	192°54'00"	C		21.73 C		Class A
PEG 441 DP 534851	UNMK 442 DP 534851	ob333	192°54'00"	C		1.00 C		Class A
UNMK 442 DP 534851	UNMK 322 DP 534851	ob335	192°54'00"	C		8.57 C		Class A
PEG 363 DP 534851	PEG 443 DP 534851	ob245	175°38'00"	C		24.92 C		Class A
PEG 443 DP 534851	UNMK 444 DP 534851	ob337	175°38'00"	C		1.05 C		Class A
UNMK 444 DP 534851	UNMK 324 DP 534851	ob339	175°38'00"	C		5.97 C		Class A
PEG 351 DP 534851	PEG 445 DP 534851	ob228	100°31'00"	C		22.64 C		Class A
PEG 445 DP 534851	PEG 446 DP 534851	ob341	100°31'00"	C		6.25 C		Class A
PEG 446 DP 534851	PEG 447 DP 534851	ob342	192°54'00"	C		14.30 C		Class A
PEG 447 DP 534851	PEG 448 DP 534851	ob344	192°54'00"	C		2.50 C		Class A
PEG 448 DP 534851	PEG 449 DP 534851	ob346	192°54'00"	C		11.70 C		Class A
PEG 449 DP 534851	PEG 450 DP 534851	ob347	192°54'00"	C		3.90 C		Class A
PEG 450 DP 534851	PEG 451 DP 534851	ob349	192°54'00"	C		10.10 C		Class A
PEG 451 DP 534851	PEG 452 DP 534851	ob350	192°54'00"	C		5.50 C		Class A
PEG 452 DP 534851	PEG 453 DP 534851	ob352	192°54'00"	C		8.50 C		Class A
PEG 453 DP 534851	PEG 454 DP 534851	ob353	192°54'00"	C		7.10 C		Class A
PEG 454 DP 534851	PEG 381 DP 534851	ob355	192°54'00"	C		19.42 C		Class A
PEG 201 DP 527534	PEG 445 DP 534851	ob124	192°42'00"	C		24.56 C		Class A
PEG 446 DP 534851	PEG 455 DP 534851	ob343	102°57'00"	C		11.63 C		Class A
PEG 455 DP 534851	PEG 383 DP 534851	ob356	102°57'00"	C		19.82 C		Class A
PEG 200 DP 527534	PEG 455 DP 534851	ob122	192°53'00"	C		26.80 C		Class A

Mark and Vector

Survey Number DP 534851

Meridional Circuit Mount Eden 2000

From	To	Code	Bearing	Adpt Surv	Bearing Correction	Distance	Adpt Surv	Class
PEG 352 DP 534851	PEG 448 DP 534851	ob230	102°54'00"	C		28.87 C		Class A
PEG 447 DP 534851	PEG 384 DP 534851	ob345	102°57'00"	C		31.60 C		Class A
PEG 449 DP 534851	PEG 386 DP 534851	ob348	102°57'00"	C		32.08 C		Class A
PEG 353 DP 534851	PEG 450 DP 534851	ob232	102°54'00"	C		28.87 C		Class A
PEG 451 DP 534851	PEG 387 DP 534851	ob351	102°57'00"	C		34.49 C		Class A
PEG 354 DP 534851	PEG 452 DP 534851	ob234	102°54'00"	C		28.87 C		Class A
PEG 453 DP 534851	PEG 456 DP 534851	ob354	102°56'00"	C		16.47 C		Class A
PEG 456 DP 534851	PEG 389 DP 534851	ob357	102°56'00"	C		21.96 C		Class A
PEG 355 DP 534851	PEG 454 DP 534851	ob236	102°54'00"	C		28.87 C		Class A
PEG 456 DP 534851	PEG 379 DP 534851	ob358	190°24'00"	C		26.01 C		Class A
PEG 195 DP 527534	PEG 457 DP 534851	ob115	192°19'00"	C		27.61 C		Class A
PEG 457 DP 534851	PEG 327 DP 534851	ob359	282°21'00"	C		20.23 C		Class A
PEG 194 DP 527534	PEG 224 DP 527534	ob113	192°17'00"	C		23.05 C		Class A
PEG 457 DP 534851	PEG 511 DP 534851	ob360	102°18'00"	C		18.14 C		Class A
PEG 328 DP 534851	PEG 221 DP 527534	ob196	102°21'00"	C		31.69 C		Class A
PEG 332 DP 534851	PEG 219 DP 527534	ob201	81°34'00"	C		16.73 C		Class A
PEG 292 DP 534851	UNMK 407 DP 534851	ob160	193°18'00"	C		14.68 C		Class A
UNMK 407 DP 534851	PEG 408 DP 534851	ob513	193°18'00"	C		1.08 C		Class A
PEG 408 DP 534851	PEG 406 DP 534851	ob515	193°18'00"	C		25.40 C		Class A
PEG 293 DP 534851	UNMK 409 DP 534851	ob162	193°18'00"	C		14.60 C		Class A
UNMK 409 DP 534851	PEG 410 DP 534851	ob517	193°18'00"	C		1.14 C		Class A
PEG 410 DP 534851	PEG 405 DP 534851	ob519	193°18'00"	C		22.95 C		Class A
PEG 294 DP 534851	UNMK 411 DP 534851	ob164	193°18'00"	C		15.99 C		Class A
UNMK 411 DP 534851	PEG 412 DP 534851	ob521	193°18'00"	C		1.04 C		Class A

Mark and Vector

Survey Number DP 534851

Meridional Circuit Mount Eden 2000

From	To	Code	Bearing	Adpt Surv	Bearing Correction	Distance	Adpt Surv	Class
PEG 412 DP 534851	PEG 402 DP 534851	ob523	193°18'00"	C		21.52 C		Class A
PEG 295 DP 534851	UNMK 413 DP 534851	ob166	193°18'00"	C		15.64 C		Class A
UNMK 413 DP 534851	PEG 414 DP 534851	ob525	193°18'00"	C		1.01 C		Class A
PEG 414 DP 534851	PEG 399 DP 534851	ob527	193°18'00"	C		23.66 C		Class A
PEG 296 DP 534851	UNMK 415 DP 534851	ob168	194°18'00"	C		10.08 C		Class A
UNMK 415 DP 534851	PEG 416 DP 534851	ob529	194°18'00"	C		1.17 C		Class A
PEG 416 DP 534851	PEG 396 DP 534851	ob531	194°18'00"	C		28.46 C		Class A
UNMK 417 DP 534851	UNMK 415 DP 534851	ob534	121°19'00"	C		17.78 C		Class A
UNMK 415 DP 534851	UNMK 460 DP 534851	ob530	134°26'00"	C		11.05 C		Class A
UNMK 460 DP 534851	UNMK 413 DP 534851	ob537	116°12'00"	C		8.00 C		Class A
UNMK 413 DP 534851	UNMK 411 DP 534851	ob526	109°51'00"	C		18.07 C		Class A
UNMK 411 DP 534851	UNMK 462 DP 534851	ob522	98°36'00"	C		7.78 C		Class A
UNMK 462 DP 534851	UNMK 409 DP 534851	ob538	86°16'00"	C		11.50 C		Class A
UNMK 409 DP 534851	UNMK 407 DP 534851	ob518	87°04'00"	C		17.09 C		Class A
UNMK 407 DP 534851	UNMK 210 DP 527534	ob514	86°25'00"	C		16.18 C		Class A
PEG 418 DP 534851	PEG 416 DP 534851	ob536	121°50'00"	C		17.83 C		Class A
PEG 416 DP 534851	PEG 465 DP 534851	ob532	134°26'00"	C		10.53 C		Class A
PEG 465 DP 534851	PEG 414 DP 534851	ob539	116°12'00"	C		8.47 C		Class A
PEG 414 DP 534851	PEG 412 DP 534851	ob528	109°56'00"	C		18.07 C		Class A
PEG 412 DP 534851	PEG 468 DP 534851	ob524	98°20'00"	C		7.97 C		Class A
PEG 468 DP 534851	PEG 410 DP 534851	ob540	86°43'00"	C		11.28 C		Class A
PEG 410 DP 534851	PEG 408 DP 534851	ob520	86°52'00"	C		17.10 C		Class A
PEG 408 DP 534851	PEG 238 DP 527534	ob516	86°08'00"	C		16.20 C		Class A
PEG 312 DP 534851	PEG 470 DP 534851	ob180	169°29'00"	C		4.65 C		Class A

Mark and Vector

Survey Number DP 534851

Meridional Circuit Mount Eden 2000

From	To	Code	Bearing	Adpt Surv	Bearing Correction	Distance	Adpt Surv	Class
PEG 470 DP 534851	PEG 427 DP 534851	ob361	104°15'00"	C		15.90 C		Class A
PEG 427 DP 534851	PEG 429 DP 534851	ob306	104°39'00"	C		15.01 C		Class A
PEG 429 DP 534851	PEG 431 DP 534851	ob310	102°15'00"	C		15.00 C		Class A
PEG 431 DP 534851	PEG 433 DP 534851	ob314	102°54'00"	C		15.00 C		Class A
PEG 433 DP 534851	PEG 435 DP 534851	ob318	103°16'00"	C		15.00 C		Class A
PEG 435 DP 534851	PEG 437 DP 534851	ob322	103°16'00"	C		15.00 C		Class A
PEG 437 DP 534851	PEG 439 DP 534851	ob326	103°16'00"	C		15.00 C		Class A
PEG 439 DP 534851	PEG 441 DP 534851	ob330	103°16'00"	C		15.00 C		Class A
PEG 441 DP 534851	PEG 443 DP 534851	ob334	103°03'00"	C		22.82 C		Class A
PEG 443 DP 534851	PEG 28 DP 534851	ob338	102°46'00"	C		22.52 C		Class A
UNMK 313 DP 534851	UNMK 475 DP 534851	ob182	169°30'00"	C		3.25 C		Class A
UNMK 475 DP 534851	UNMK 428 DP 534851	ob362	103°22'00"	C		16.46 C		Class A
UNMK 428 DP 534851	UNMK 430 DP 534851	ob308	104°39'00"	C		15.01 C		Class A
UNMK 430 DP 534851	UNMK 432 DP 534851	ob312	102°15'00"	C		15.00 C		Class A
UNMK 432 DP 534851	UNMK 434 DP 534851	ob316	102°54'00"	C		15.00 C		Class A
UNMK 434 DP 534851	UNMK 436 DP 534851	ob320	103°15'00"	C		15.00 C		Class A
UNMK 436 DP 534851	UNMK 438 DP 534851	ob324	103°15'00"	C		15.00 C		Class A
UNMK 438 DP 534851	UNMK 440 DP 534851	ob328	103°15'00"	C		15.00 C		Class A
UNMK 440 DP 534851	UNMK 442 DP 534851	ob332	103°15'00"	C		15.00 C		Class A
UNMK 442 DP 534851	UNMK 444 DP 534851	ob336	103°03'00"	C		23.13 C		Class A
UNMK 444 DP 534851	UNMK 481 DP 534851	ob340	102°45'00"	C		20.29 C		Class A
RM 25 DP 527534	PEG 205 DP 527534	ob4	282°16'00"	M		50.14 M		
RM 31 DP 534851	PEG 509 DP 534851	ob397	109°44'00"	M		13.70 M		
RM 25 DP 527534	PEG 201 DP 527534	ob5	262°29'00"	M		47.31 M		

Mark and Vector

Survey Number DP 534851

Meridional Circuit Mount Eden 2000

From	To	Code	Bearing	Adpt Surv	Bearing Correction	Distance	Adpt Surv	Class
RM 25 DP 527534	PEG 200 DP 527534	ob6	254°55'00" M			29.88 M		
RM 25 DP 527534	PEG 199 DP 527534	ob7	235°19'00" M			16.07 M		
RM 25 DP 527534	PEG 198 DP 527534	ob8	216°58'00" M			16.77 M		
RM 25 DP 527534	PEG 197 DP 527534	ob9	159°59'00" M			17.96 M		
RM 25 DP 527534	PEG 196 DP 527534	ob10	141°40'00" M			17.61 M		
RM 25 DP 527534	PEG 195 DP 527534	ob11	122°49'00" M			31.88 M		
RM 23 DP 527534	PEG 194 DP 527534	ob38	264°19'00" M			35.98 M		
RM 23 DP 527534	PEG 192 DP 527534	ob39	213°48'00" M			16.25 M		
ALP 22 DP 527534	PEG 191 DP 527534	ob41	359°34'00" M			29.92 M		
ALP 22 DP 527534	PEG 190 DP 527534	ob42	357°50'00" M			26.10 M		
RM 20 DP 527534	PEG 177 DP 527534	ob16	51°03'00" M			40.43 M		
RM 20 DP 527534	PEG 176 DP 527534	ob17	50°17'00" M			37.23 M		
RM 20 DP 527534	PEG 174 DP 527534	ob18	40°25'00" M			26.53 M		
RM 20 DP 527534	PEG 173 DP 527534	ob19	22°29'00" M			20.20 M		
RM 20 DP 527534	PEG 172 DP 527534	ob20	9°06'00" M			22.31 M		
RM 20 DP 527534	PEG 507 DP 534851	ob21	326°16'00" M			23.30 M		
RM 20 DP 527534	PEG 170 DP 527534	ob22	311°31'00" M			22.24 M		
RM 20 DP 527534	PEG 169 DP 527534	ob23	302°51'00" M			25.71 M		
RM 20 DP 527534	PEG 168 DP 527534	ob24	296°27'00" M			29.56 M		
RM 20 DP 527534	PEG 167 DP 527534	ob25	262°18'00" M			24.05 M		
RM 20 DP 527534	PEG 166 DP 527534	ob26	263°04'00" M			15.73 M		
IS III SO 70137	PEG 79 DP 527534	ob52	112°37'00" M			77.66 M		
IS III SO 70137	PEG 505 DP 534851	ob53	113°24'00" M			73.54 M		
IS III SO 70137	PEG 292 DP 534851	ob54	118°09'30" M			63.27 M		

Mark and Vector

Survey Number DP 534851

Meridional Circuit Mount Eden 2000

From	To	Code	Bearing	Adpt Surv	Bearing Correction	Distance	Adpt Surv	Class
IS III SO 70137	PEG 293 DP 534851	ob55	128°32'00" M			49.47 M		
IS 38 DP 534851	PEG 294 DP 534851	ob568	191°44'00" M			38.27 M		
IS III SO 70137	PEG 295 DP 534851	ob56	173°12'00" M			23.41 M		
IS III SO 70137	PEG 296 DP 534851	ob57	217°33'00" M			21.99 M		
IS III SO 70137	PEG 297 DP 534851	ob58	252°09'00" M			30.33 M		
ALP 33 DP 534851	PEG 301 DP 534851	ob419	315°39'00" M			14.35 M		
ALP 33 DP 534851	PEG 302 DP 534851	ob420	308°02'00" M			20.54 M		
ALP 33 DP 534851	PEG 303 DP 534851	ob421	262°43'00" M			22.36 M		
ALP 33 DP 534851	PEG 304 DP 534851	ob422	253°21'00" M			17.35 M		
ALP 33 DP 534851	PEG 305 DP 534851	ob423	239°04'00" M			13.74 M		
ALP 33 DP 534851	PEG 306 DP 534851	ob424	215°41'00" M			15.45 M		
ALP 33 DP 534851	PEG 396 DP 534851	ob425	95°33'00" M			17.72 M		
ALP 33 DP 534851	PEG 397 DP 534851	ob426	100°23'00" M			24.10 M		
ALP 33 DP 534851	PEG 398 DP 534851	ob427	102°57'00" M			31.12 M		
ALP 33 DP 534851	PEG 399 DP 534851	ob428	103°34'00" M			35.33 M		
ALP 33 DP 534851	PEG 400 DP 534851	ob429	103°54'00" M			38.23 M		
ALP 33 DP 534851	PEG 345 DP 534851	ob430	161°22'00" M			20.29 M		
ALP 33 DP 534851	PEG 344 DP 534851	ob431	146°53'00" M			20.21 M		
ALP 33 DP 534851	PEG 343 DP 534851	ob432	138°52'00" M			25.96 M		
ALP 33 DP 534851	PEG 342 DP 534851	ob433	131°28'00" M			34.86 M		
ALP 33 DP 534851	PEG 341 DP 534851	ob434	126°05'00" M			44.17 M		
ALP 33 DP 534851	PEG 414 DP 534851	ob435	69°40'00" M			42.43 M		
ALP 33 DP 534851	PEG 465 DP 534851	ob436	60°08'00" M			37.12 M		
IS III SO 70137	PEG 504 DP 534851	ob59	139°24'00" M			41.44 M		

Mark and Vector

Survey Number DP 534851

Meridional Circuit Mount Eden 2000

From	To	Code	Bearing	Adpt Surv	Bearing Correction	Distance	Adpt Surv	Class
IS III SO 70137	PEG 502 DP 534851	ob60	212°44'00" M			21.77 M		
RM 31 DP 534851	PEG 401 DP 534851	ob398	295°47'00" M			39.38 M		
RM 31 DP 534851	PEG 402 DP 534851	ob399	299°03'00" M			32.88 M		
RM 31 DP 534851	PEG 403 DP 534851	ob400	299°55'00" M			31.51 M		
RM 31 DP 534851	PEG 404 DP 534851	ob401	304°27'00" M			26.74 M		
RM 31 DP 534851	PEG 405 DP 534851	ob402	324°46'00" M			17.21 M		
RM 31 DP 534851	PEG 406 DP 534851	ob403	27°35'00" M			14.23 M		
RM 31 DP 534851	PEG 340 DP 534851	ob404	270°15'00" M			35.10 M		
RM 31 DP 534851	PEG 339 DP 534851	ob405	266°36'00" M			23.56 M		
RM 31 DP 534851	PEG 335 DP 534851	ob406	125°23'00" M			6.83 M		
ALP 32 DP 534851	PEG 445 DP 534851	ob496	47°02'30" M			60.24 M		
ALP 37 DP 534851	PEG 446 DP 534851	ob365	321°16'00" M			48.04 M		
ALP 32 DP 534851	PEG 351 DP 534851	ob497	25°47'00" M			50.17 M		
ALP 32 DP 534851	PEG 390 DP 534851	ob498	5°24'00" M			41.46 M		
ALP 32 DP 534851	PEG 425 DP 534851	ob499	341°11'00" M			48.33 M		
ALP 34 DP 534851	PEG 420 DP 534851	ob438	60°42'00" M			47.99 M		
RM 31 DP 534851	PEG 412 DP 534851	ob407	327°11'00" M			43.91 M		
RM 31 DP 534851	PEG 410 DP 534851	ob408	352°43'00" M			36.69 M		
RM 31 DP 534851	PEG 408 DP 534851	ob409	18°25'00" M			39.34 M		
RM 31 DP 534851	PEG 468 DP 534851	ob410	336°00'00" M			39.13 M		
ALP 34 DP 534851	PEG 346 DP 534851	ob439	22°40'00" M			32.72 M		
ALP 34 DP 534851	PEG 347 DP 534851	ob440	30°45'00" M			18.12 M		
ALP 34 DP 534851	PEG 419 DP 534851	ob441	51°18'00" M			41.14 M		
ALP 34 DP 534851	PEG 421 DP 534851	ob442	77°02'00" M			39.51 M		

Mark and Vector

Survey Number DP 534851

Meridional Circuit Mount Eden 2000

From	To	Code	Bearing	Adpt Surv	Bearing Correction	Distance	Adpt Surv	Class
ALP 34 DP 534851	PEG 422 DP 534851	ob443	99°18'00" M			35.62 M		
ALP 34 DP 534851	PEG 423 DP 534851	ob444	122°39'00" M			37.78 M		
ALP 34 DP 534851	PEG 348 DP 534851	ob445	80°54'00" M			5.99 M		
ALP 34 DP 534851	PEG 426 DP 534851	ob446	127°13'00" M			30.99 M		
ALP 34 DP 534851	PEG 349 DP 534851	ob447	169°23'00" M			13.91 M		
ALP 36 DP 534851	PEG 308 DP 534851	ob455	347°47'00" M			16.68 M		
ALP 36 DP 534851	PEG 309 DP 534851	ob456	327°57'00" M			15.69 M		
ALP 36 DP 534851	PEG 310 DP 534851	ob457	256°32'00" M			12.37 M		
ALP 36 DP 534851	PEG 471 DP 534851	ob458	238°43'00" M			7.88 M		
ALP 36 DP 534851	PEG 482 DP 534851	ob459	154°22'00" M			7.02 M		
ALP 36 DP 534851	PEG 312 DP 534851	ob460	181°35'00" M			22.31 M		
ALP 36 DP 534851	PEG 375 DP 534851	ob461	111°19'00" M			37.52 M		
ALP 36 DP 534851	PEG 350 DP 534851	ob462	45°07'00" M			17.85 M		
ALP 36 DP 534851	PEG 361 DP 534851	ob463	63°28'00" M			17.51 M		
ALP 36 DP 534851	PEG 360 DP 534851	ob464	83°51'00" M			34.08 M		
ALP 36 DP 534851	PEG 427 DP 534851	ob465	153°04'00" M			34.53 M		
ALP 36 DP 534851	PEG 429 DP 534851	ob466	138°54'00" M			45.89 M		
ALP 36 DP 534851	PEG 470 DP 534851	ob467	179°30'00" M			26.87 M		
ALP 32 DP 534851	PEG 391 DP 534851	ob500	1°11'00" M			26.66 M		
ALP 32 DP 534851	PEG 392 DP 534851	ob501	346°55'00" M			12.35 M		
ALP 32 DP 534851	PEG 393 DP 534851	ob502	247°09'00" M			6.67 M		
ALP 32 DP 534851	PEG 424 DP 534851	ob503	273°56'00" M			24.98 M		
ALP 32 DP 534851	PEG 352 DP 534851	ob504	31°28'00" M			35.14 M		
ALP 32 DP 534851	PEG 353 DP 534851	ob505	45°11'00" M			20.95 M		

Mark and Vector

Survey Number DP 534851

Meridional Circuit Mount Eden 2000

From	To	Code	Bearing	Adpt Surv	Bearing Correction	Distance	Adpt Surv	Class
ALP 32 DP 534851	PEG 354 DP 534851	ob506	92°12'00" M			11.39 M		
ALP 32 DP 534851	PEG 355 DP 534851	ob507	153°13'00" M			17.52 M		
ALP 32 DP 534851	PEG 452 DP 534851	ob508	99°53'00" M			40.11 M		
ALP 32 DP 534851	PEG 453 DP 534851	ob509	111°57'00" M			40.56 M		
ALP 32 DP 534851	PEG 454 DP 534851	ob510	121°30'00" M			42.26 M		
ALP 35 DP 534851	PEG 359 DP 534851	ob476	285°42'00" M			32.74 M		
ALP 35 DP 534851	PEG 358 DP 534851	ob477	288°09'00" M			17.51 M		
ALP 35 DP 534851	PEG 357 DP 534851	ob478	305°32'00" M			14.56 M		
ALP 35 DP 534851	PEG 356 DP 534851	ob479	42°20'00" M			6.43 M		
ALP 35 DP 534851	PEG 382 DP 534851	ob480	90°25'00" M			7.34 M		
ALP 35 DP 534851	PEG 381 DP 534851	ob481	100°04'00" M			32.07 M		
ALP 35 DP 534851	PEG 380 DP 534851	ob482	100°51'00" M			44.70 M		
ALP 35 DP 534851	PEG 374 DP 534851	ob483	256°57'00" M			34.30 M		
ALP 35 DP 534851	PEG 373 DP 534851	ob484	239°26'00" M			21.83 M		
ALP 35 DP 534851	PEG 372 DP 534851	ob485	196°07'00" M			15.04 M		
ALP 35 DP 534851	PEG 371 DP 534851	ob486	149°36'00" M			20.64 M		
ALP 35 DP 534851	PEG 370 DP 534851	ob487	130°09'00" M			32.79 M		
ALP 35 DP 534851	PEG 367 DP 534851	ob488	121°37'00" M			46.63 M		
ALP 35 DP 534851	PEG 431 DP 534851	ob489	233°14'00" M			47.65 M		
ALP 35 DP 534851	PEG 433 DP 534851	ob490	216°27'00" M			39.63 M		
ALP 35 DP 534851	PEG 435 DP 534851	ob491	194°13'00" M			36.42 M		
ALP 35 DP 534851	PEG 437 DP 534851	ob492	171°42'00" M			39.17 M		
ALP 35 DP 534851	PEG 439 DP 534851	ob493	154°21'00" M			46.80 M		
ALP 35 DP 534851	PEG 441 DP 534851	ob494	142°37'00" M			57.42 M		

Mark and Vector

Survey Number DP 534851

Meridional Circuit Mount Eden 2000

From	To	Code	Bearing	Adpt Surv	Bearing Correction	Distance	Adpt Surv	Class
ALP 37 DP 534851	PEG 455 DP 534851	ob366	331°46'00" M			39.58 M		
ALP 37 DP 534851	PEG 383 DP 534851	ob367	1°07'00" M			30.43 M		
ALP 37 DP 534851	PEG 327 DP 534851	ob368	30°52'00" M			33.60 M		
ALP 37 DP 534851	PEG 457 DP 534851	ob369	56°28'00" M			44.38 M		
ALP 37 DP 534851	PEG 328 DP 534851	ob370	45°16'00" M			19.64 M		
ALP 37 DP 534851	PEG 329 DP 534851	ob371	60°31'00" M			14.33 M		
ALP 37 DP 534851	PEG 330 DP 534851	ob372	88°36'00" M			11.30 M		
ALP 37 DP 534851	PEG 331 DP 534851	ob373	121°37'00" M			12.55 M		
ALP 37 DP 534851	PEG 332 DP 534851	ob374	139°18'00" M			16.36 M		
ALP 37 DP 534851	PEG 334 DP 534851	ob375	144°57'00" M			18.73 M		
ALP 37 DP 534851	PEG 386 DP 534851	ob376	295°57'00" M			5.73 M		
ALP 37 DP 534851	PEG 385 DP 534851	ob377	340°33'00" M			11.22 M		
ALP 37 DP 534851	PEG 384 DP 534851	ob378	351°30'00" M			16.64 M		
ALP 37 DP 534851	PEG 447 DP 534851	ob379	305°17'00" M			40.74 M		
ALP 37 DP 534851	PEG 448 DP 534851	ob380	301°58'00" M			39.85 M		
ALP 37 DP 534851	PEG 449 DP 534851	ob381	284°54'00" M			37.69 M		
ALP 37 DP 534851	PEG 450 DP 534851	ob382	278°59'00" M			37.75 M		
ALP 37 DP 534851	PEG 451 DP 534851	ob383	264°17'00" M			39.74 M		
ALP 37 DP 534851	PEG 387 DP 534851	ob384	206°55'00" M			13.10 M		
ALP 37 DP 534851	PEG 388 DP 534851	ob385	199°37'00" M			17.33 M		
ALP 37 DP 534851	PEG 389 DP 534851	ob386	191°15'00" M			26.72 M		
ALP 37 DP 534851	PEG 456 DP 534851	ob387	231°21'00" M			34.08 M		
RM 20 DP 527534	PEG 377 DP 534851	ob27	293°28'00" M			32.18 M		
RM 20 DP 527534	PEG 378 DP 534851	ob28	288°44'00" M			39.29 M		

Mark and Vector

Survey Number DP 534851

Meridional Circuit Mount Eden 2000

From	To	Code	Bearing	Adpt Surv	Bearing Correction	Distance	Adpt Surv	Class
RM 20 DP 527534	PEG 379 DP 534851	ob29	287°59'00"	M		41.95 M		
RM 20 DP 527534	PEG 366 DP 534851	ob30	265°12'00"	M		42.78 M		
RM 20 DP 527534	PEG 364 DP 534851	ob31	263°30'00"	M		35.71 M		
RM 20 DP 527534	PEG 363 DP 534851	ob32	263°16'00"	M		33.80 M		
RM 20 DP 527534	PEG 362 DP 534851	ob33	262°27'00"	M		28.56 M		
RM 20 DP 527534	PEG 443 DP 534851	ob34	227°42'00"	M		42.81 M		
RM 20 DP 527534	PEG 28 DP 534851	ob35	196°02'00"	M		35.15 M		
RM 20 DP 527534	PEG 291 DP 534851	ob36	195°49'00"	M		35.52 M		
RM 31 DP 534851	PEG 238 DP 527534	ob411	36°40'00"	M		47.89 M		
ALP 37 DP 534851	PEG 224 DP 527534	ob388	65°44'30"	M		61.09 M		
ALP 37 DP 534851	PEG 511 DP 534851	ob389	69°19'30"	M		58.49 M		
ALP 37 DP 534851	PEG 510 DP 534851	ob390	76°00'30"	M		52.28 M		
ALP 37 DP 534851	PEG 221 DP 527534	ob391	81°05'00"	M		45.46 M		
ALP 37 DP 534851	PEG 220 DP 527534	ob392	88°25'00"	M		38.69 M		
ALP 37 DP 534851	PEG 219 DP 527534	ob393	110°05'00"	M		28.97 M		
IS III SO 70137	PEG 501 DP 534851	ob61	242°33'00"	M		26.29 M		
IS III SO 70137	PEG 500 DP 534851	ob62	248°58'00"	M		28.75 M		
ALP 36 DP 534851	UNMK 87 DP 463561	ob468	171°16'00"	C		197.71 C		
UNMK 87 DP 463561	UNMK (88) SO 70137	ob544	169°10'00"	A	SO 70137	46.57 A	DP 463561	Class A
UNMK (73) SO 70137	UNMK (80) SO 70137	ob550	62°51'10"	A	DP 522519	32.85 A	DP 522519	
UNMK (80) SO 70137	PEG (79) SO 70137	ob551	31°20'00"	A	SO 70137	11.40 A	SO 70137	Class A
PEG (79) SO 70137	UNMK 78 DP 463561	ob552	31°20'00"	A	SO 70137	20.15 A	DP 463561	Class A
UNMK 78 DP 463561	ALP 8 DP 522519	ob545	84°34'00"	C		92.60 C		
PEG (84) SO 70137	UNMK 83 DP 463561	ob564	349°10'00"	A	SO 70137	18.71 A	DP 463561	Class A

Mark and Vector

Survey Number DP 534851

Meridional Circuit Mount Eden 2000

From	To	Code	Bearing	Adpt Surv	Bearing Correction	Distance	Adpt Surv	Class
UNMK 158 SO 70137	IT VIII SO 70137	ob547	319°43'00"	A DP 522519		18.79 A	DP 522519	
IT VIII SO 70137	IT III DP 135875	ob553	91°33'00"	A SO 70137		77.36 A	SO 70137	
IT III DP 135875	STN XA DP 320230	ob554	104°07'20"	A DP 320230		58.60 A	DP 320230	
STN XA DP 320230	IS X DP 320230	ob555	104°07'20"	A DP 320230		72.54 A	DP 320230	
IS X DP 320230	IS IX DP 320230	ob556	105°59'20"	A DP 320230		85.92 A	DP 320230	
IS IX DP 320230	IS VIII DP 320230	ob557	40°38'50"	A DP 320230		94.93 A	DP 320230	
IS VIII DP 320230	IS VII DP 198122	ob560	154°31'20"	A DP 320230		92.16 A	DP 320230	
IS VII DP 198122	IT VIII DP 198122	ob561	88°10'30"	A DP 320230		65.52 A	DP 320230	
IT VIII DP 198122	IS XV DP 65871	ob562	176°44'00"	A DP 320230		23.50 A	DP 320230	
IS XV DP 65871	UNMK 23 DP 320230	ob563	235°00'00"	A DP 320230		28.50 A	DP 320230	
UNMK (88) SO 70137	UNMK (73) SO 70137	ob548	75°57'00"	A DP 463561		20.12 A	DP 463561	
UNMK 83 DP 463561	IS IX DP 320230	ob546	346°52'00"	C		28.59 C		
UNMK (73) SO 70137	PEG (84) SO 70137	ob549	349°10'00"	A SO 70137		1.30 A	SO 70137	Class A
ALP 33 DP 534851	PEG 418 DP 534851	ob415	15°06'00"	M		36.52 M		
ALP 33 DP 534851	PEG 416 DP 534851	ob416	43°39'00"	M		35.73 M		
ALP 33 DP 534851	PEG 307 DP 534851	ob417	19°43'00"	M		5.44 M		
RM 31 DP 534851	PEG 337 DP 534851	ob412	249°20'00"	M		17.10 M		
RM 31 DP 534851	PEG 336 DP 534851	ob413	174°43'00"	M		7.54 M		
RM 31 DP 534851	PEG 338 DP 534851	ob414	264°40'00"	M		19.18 M		
ALP 36 DP 534851	UNMK 314 DP 534851	ob448	186°07'00"	C		37.01 C		
ALP 36 DP 534851	UNMK 315 DP 534851	ob449	161°51'00"	C		42.89 C		
ALP 36 DP 534851	UNMK 316 DP 534851	ob450	147°36'30"	C		52.24 C		
ALP 35 DP 534851	UNMK 317 DP 534851	ob469	226°35'00"	C		55.60 C		
ALP 35 DP 534851	UNMK 318 DP 534851	ob470	211°47'00"	C		48.90 C		

Mark and Vector

Survey Number DP 534851

Meridional Circuit Mount Eden 2000

From	To	Code	Bearing	Adpt Surv	Bearing Correction	Distance	Adpt Surv	Class
ALP 35 DP 534851	UNMK 319 DP 534851	ob471	193°56'00"	C		46.27 C		
ALP 35 DP 534851	UNMK 320 DP 534851	ob472	175°52'00"	C		48.39 C		
ALP 35 DP 534851	UNMK 321 DP 534851	ob473	160°40'00"	C		54.69 C		
ALP 35 DP 534851	UNMK 322 DP 534851	ob474	149°13'30"	C		63.96 C		
RM 20 DP 527534	UNMK 323 DP 534851	ob13	228°44'00"	C		55.09 C		
RM 20 DP 527534	UNMK 324 DP 534851	ob14	221°00'00"	C		47.45 C		
ALP 36 DP 534851	PEG 376 DP 534851	ob451	116°51'00"	M		22.79 M		
RM 20 DP 527534	PEG 175 DP 527534	ob12	46°53'00"	M		31.58 M		
RM 31 DP 534851	PEG 508 DP 534851	ob394	50°18'00"	M		18.65 M		
PEG 647 DP 522519	PEG 165 DP 527534	ob565	356°33'00"	A DP 527534		20.17 A DP 527534	Class A	
RM 25 DP 527534	ALP 24 DP 527534	ob0	111°04'00"	M		39.17 M		
ALP 24 DP 527534	RM 23 DP 527534	ob566	94°34'00"	M		43.89 M		
IS III SO 70137	IS 38 DP 534851	ob50	73°02'00"	M		28.88 M		
IS 38 DP 534851	AP IV SO 70137	ob567	290°25'20"	M		219.75 M		
IS IX DP 320230	UNMK (88) SO 70137	ob558	190°01'00"	A DP 463561		53.21 A DP 463561		
IS IX DP 320230	UNMK (73) SO 70137	ob559	167°49'00"	A DP 463561		48.61 A DP 463561		

Mark Name	Description
ALP 21 DP 527534	Aluminium Plug in top of kerb
ALP 22 DP 527534	Aluminium Plug in top of kerb
ALP 32 DP 534851	pin in channel
ALP 33 DP 534851	pin in channel
ALP 34 DP 534851	pin in channel
ALP 35 DP 534851	pin in channel
ALP 36 DP 534851	pin in channel
ALP 37 DP 534851	pin in channel
ALP 8 DP 522519	In concrete channel of new kerb and channel
ALP 9 DP 522519	In concrete channel of new kerb and channel
AP IV SO 70137	Aluminium plug in roundabout footpath

Mark and Vector

Survey Number DP 534851
Meridional Circuit Mount Eden 2000

Mark Name	Description
PEG 500 DP 534851	DISK (14) SO 70137 reinstated.
PEG 501 DP 534851	DISK (9) SO 70137 reinstated.
PEG 502 DP 534851	DISK (10) SO 70137 reinstated.
PEG 504 DP 534851	DISK (2) SO 70137 reinstated.
PEG 505 DP 534851	DISK (7) SO 70137 reinstated
PEG 506 DP 534851	PEG 189 DP 527534 reinstated.
PEG 507 DP 534851	PEG 171 DP 527534 reinstated
PEG 508 DP 534851	PEG 203 DP 527534 reinstated.
PEG 509 DP 534851	PEG 202 DP 527534 reinstated.
PEG 510 DP 534851	PEG 222 DP 527534 reinstated.
PEG 511 DP 534851	PEG 223 DP 527534 reinstated.
RM 1 DP 522519	In concrete channel of new kerb and channel
RM 20 DP 527534	bronze plaque in channel
RM 23 DP 527534	bronze plaque in channel
RM 25 DP 527534	bronze plaque in channel
RM 31 DP 534851	plaque in channel

***** End of Report *****

Schedule / Memorandum

Land Registration District

North Auckland

Survey Number

LT 534851

Territorial Authority (the Council)

Auckland Council

Notes

Last Edited: 25 Sep 2019 17:32:20

Land Covenants:

Areas GA to GP are subject to Land Covenants.

Areas AK to AP are subject to Land Covenants

Areas EL to EU are subject to Land Covenants.

Moveable Marginal Strips:

Moveable Marginal Strips HH & II are existing Moveable Strips previously shown as Areas HH & II DP 527534.

Notes:

All lots are subject to Part IVA Conservation Act 1987 (affects land formerly Sections 7, 8 & 9 SO 70137)

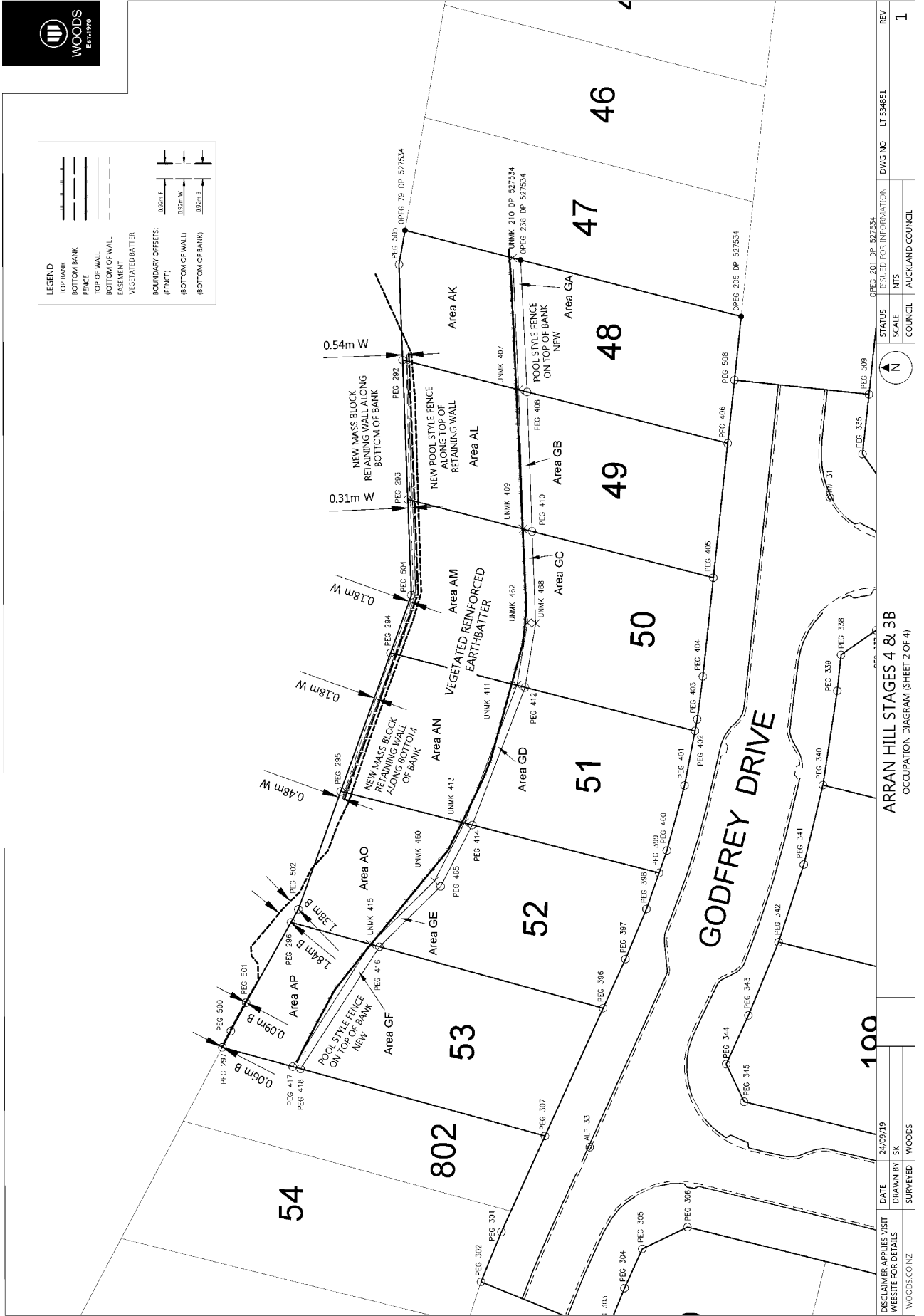
Occupation Diagram



Occupation Diagram



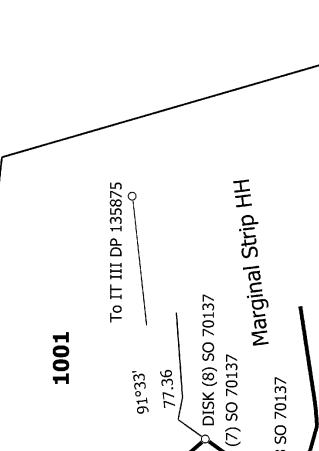
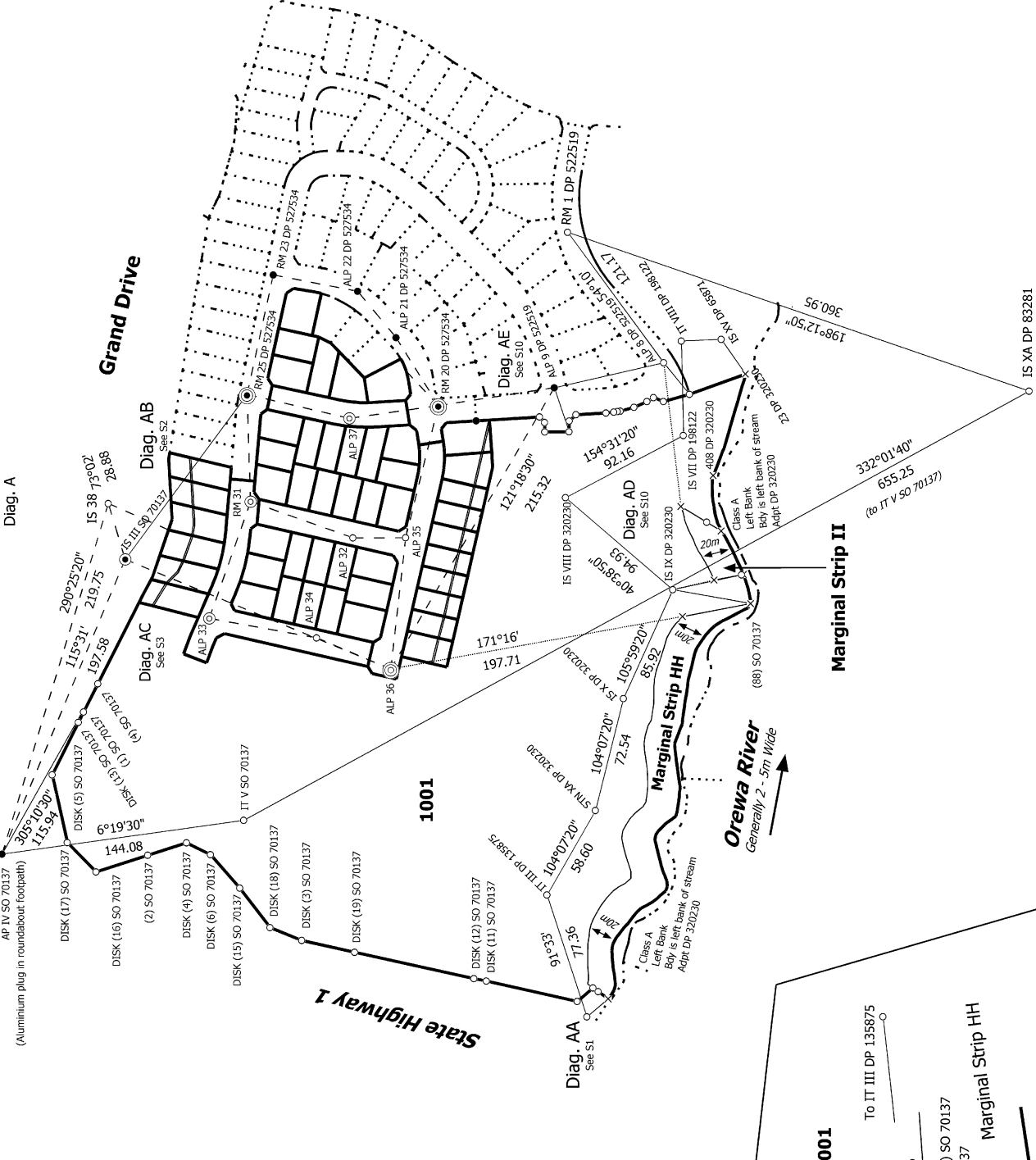
LEGEND	
	TOP BANK
	BOTTOM BANK
	FENCE
	TOP OF WALL
	BOTTOM OF WALL
	EASEMENT
	VEGETATED BATTER
BOUNDARY OFFSETS:	
	0.2m F (FENCE)
	0.32m W (BOTTOM OF WALL)
	0.32m B (BOTTOM OF BANK)



DISCLAIMER APPLICABLE VISIT WEBSITE FOR DETAILS	WOODS.CO.NZ	DATE	24/09/19	DRAWN BY	SK	SURVEYED	WOODS
ARRAN HILL STAGES 4 & 3B OCCUPATION DIAGRAM (SHEET 2 OF 4)							
STATUS	ISSUED FOR INFORMATION	DWG NO	LT 534851	COUNCIL	AUCKLAND COUNCIL	SCALE	NTS
REV	1						



All lots are subject to Part IVA Conservation Act 1987 (affects land formerly Sections 7, 8 & 9 SO 70137)



S 1/10

Land District: North Auckland
 Digitally Generated Plan
 Generated on: 21/10/2019 06:23am | Page 34 of 50

Lots 48-53, 164-173, 196-212, 216-230, 902-904 & 1001 being a Subdivision of Lot 1001 DP 527534

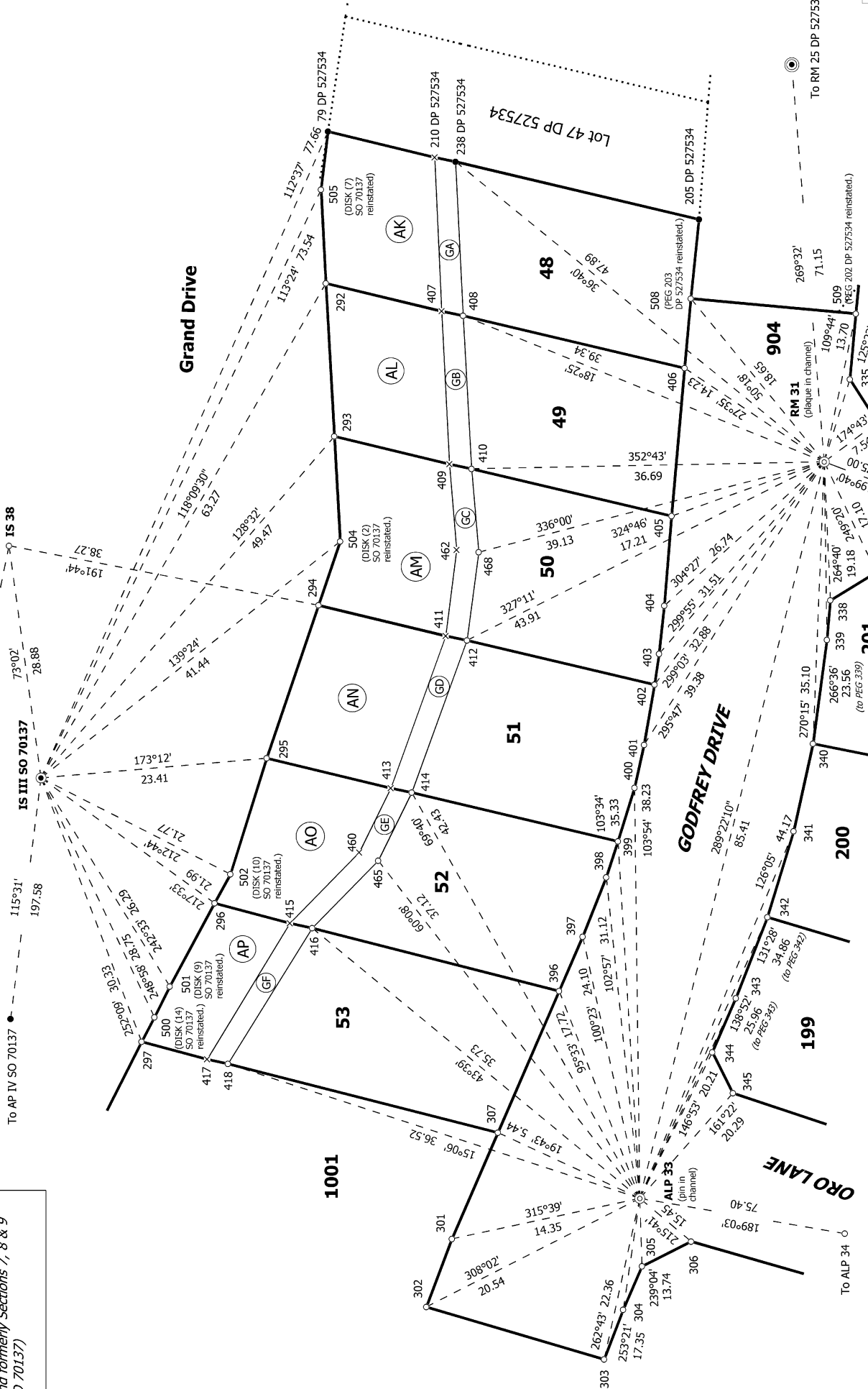
Surveyor: Kendall Lisa Reid
 Firm: Wood & Partners Consultants Ltd
 Survey Date: 4/06/2019

CSD Plan
 LT 534851
 Approved on: 21/10/2019



Diag. AC

All lots are subject to Part IVA Conservation Act 1987 (affects land formerly Sections 7, 8 & 9 SO 70137)



S 3/10

Land District: North Auckland

Digitally Generated Plan

Generated on: 21/10/2019 06:23am Page 36 of 50

Lots 48-53, 164-173, 196-212, 216-230, 902-904 & 1001 being a Subdivision of Lot 1001 DP 527534

Surveyor: Kendall Lisa Reid

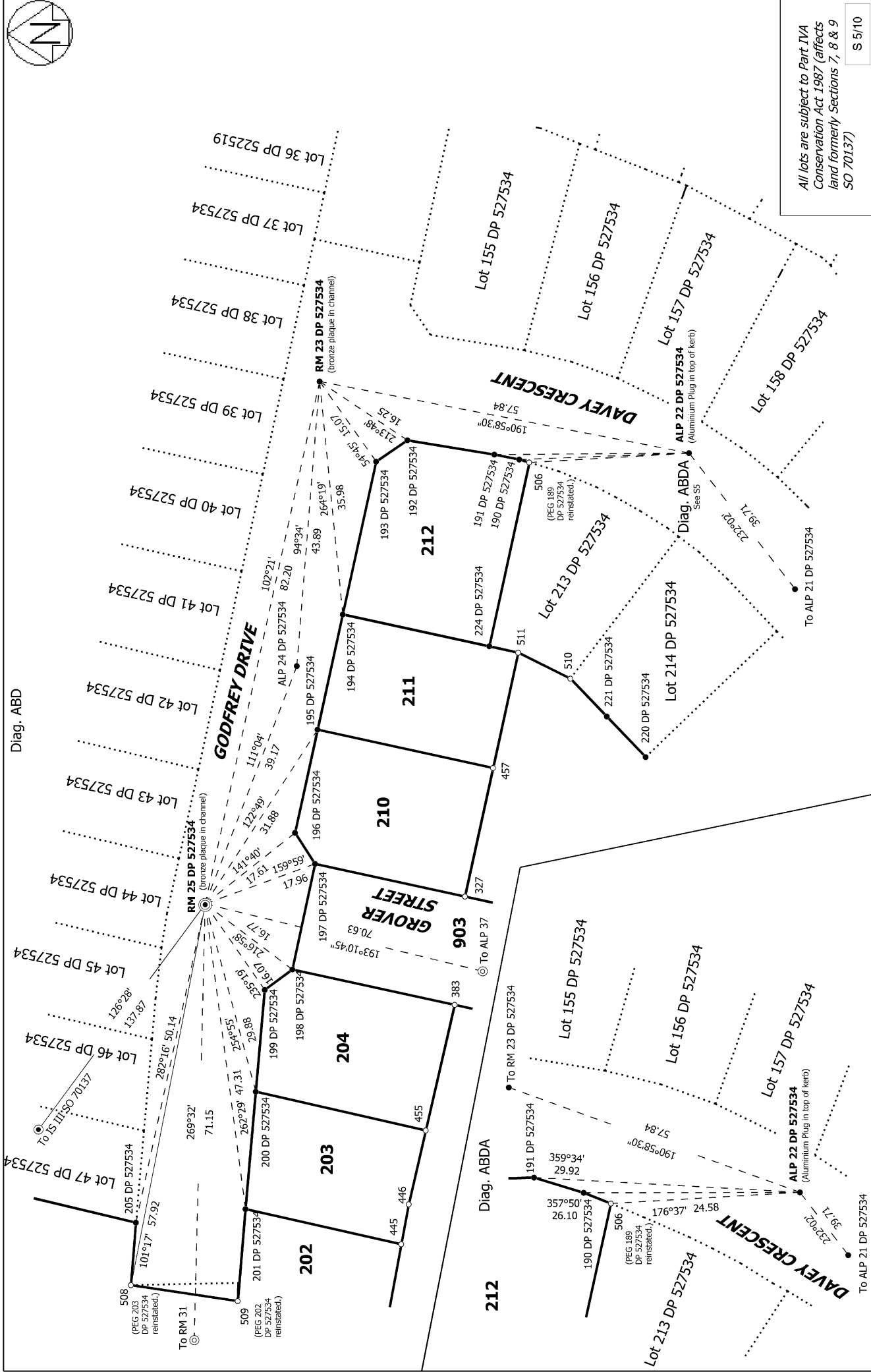
Firm: Wood & Partners Consultants Ltd

Survey Date: 4/06/2019

CSD Plan

LT 534851

Approved on: 21/10/2019



All lots are subject to Part IVA Conservation Act 1987 (affects land formerly Sections 7, 8 & 9 SO 70137)

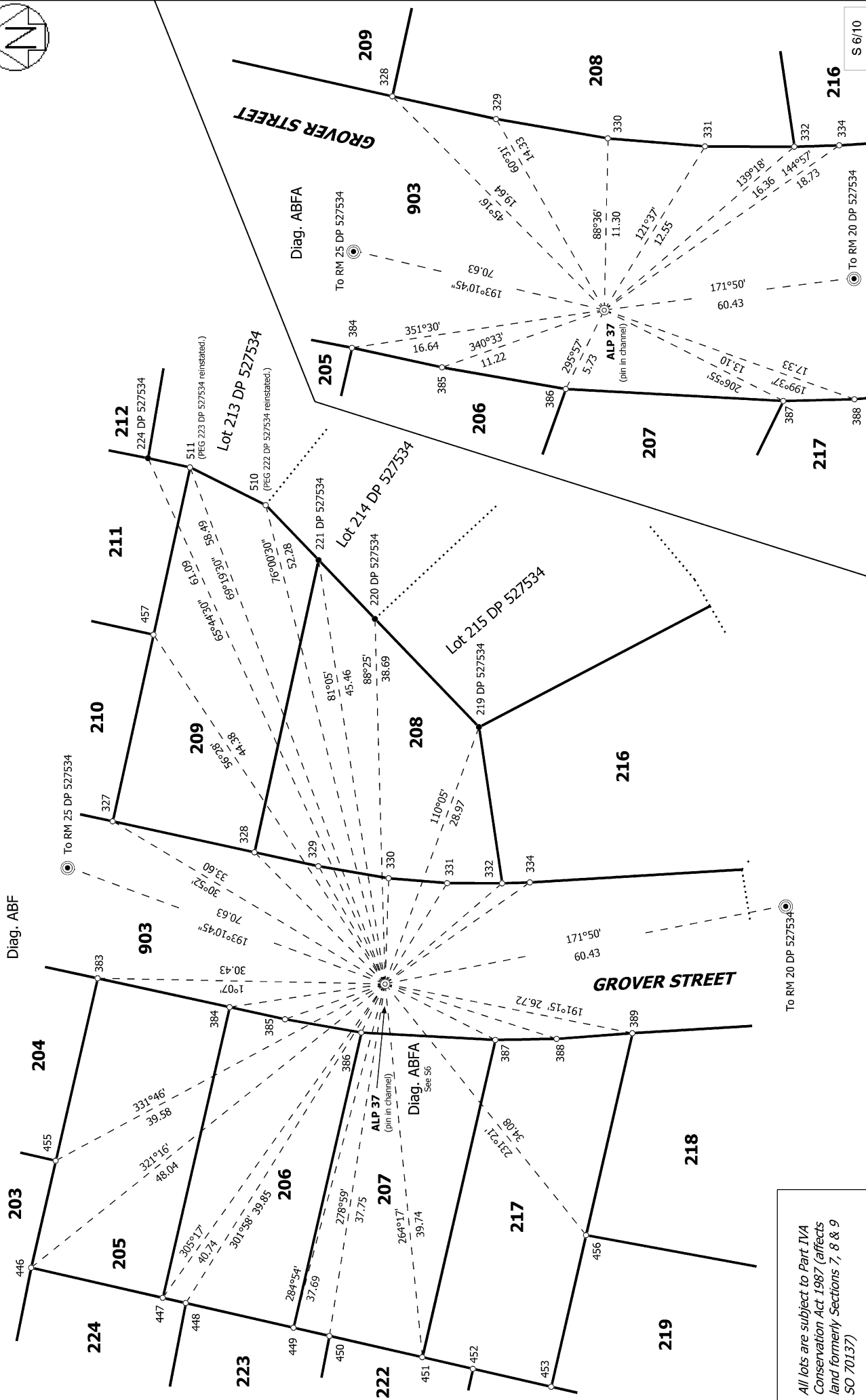
S 5/10

CSD Plan
LT 534851
Approved on: 21/10/2019

Surveyor: Kendall Lisa Reid
Firm: Wood & Partners Consultants Ltd
Survey Date: 4/06/2019

Lots 48-53, 164-173, 196-212, 216-230, 902-904 & 1001 being a Subdivision of Lot 1001 DP 527534

Land District: North Auckland
Digitally Generated Plan
Generated on: 21/10/2019 06:23:00 Page 38 of 50



All lots are subject to Part IVA Conservation Act 1987 (affects land formerly Sections 7, 8 & 9 SO 70137)

<p>Land District: North Auckland</p> <p>Digitally Generated Plan</p> <p>Generated on: 21/10/2019 06:23am Page 39 of 50</p>	<p>Lots 48-53, 164-173, 196-212, 216-230, 902-904 & 1001 being a Subdivision of Lot 1001 DP 527534</p>	<p>Surveyor: Kendall Lisa Reid Firm: Wood & Partners Consultants Ltd Survey Date: 4/06/2019</p>	<p>CSD Plan LT 534851 Approved on: 21/10/2019</p>
---	---	---	---

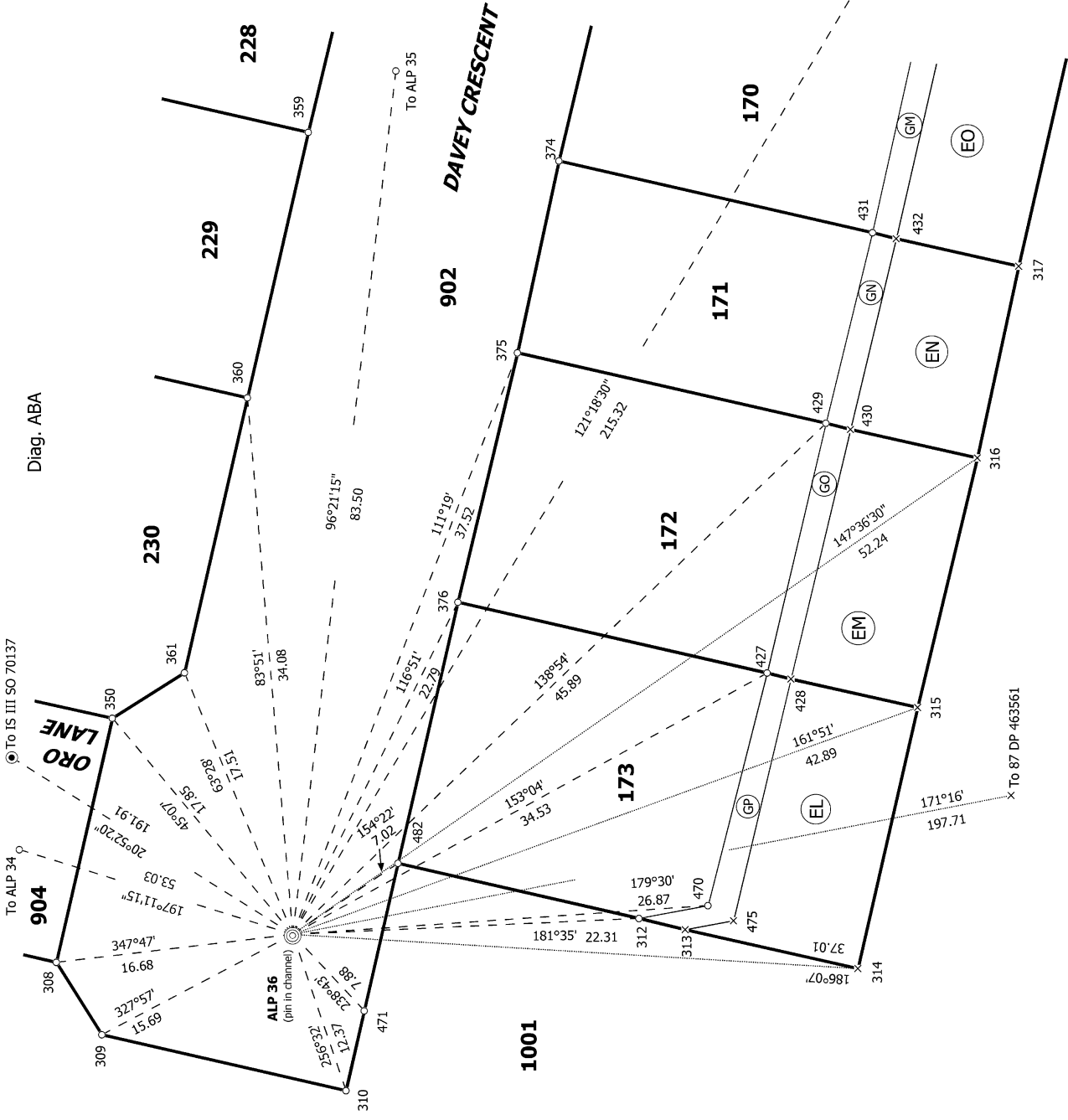
S 6/10



All lots are subject to Part IVA
Conservation Act 1987 (affects
land formerly Sections 7, 8 & 9
SO 70137)

To ALP 34

Diag. ABA



S 7/10

Land District: North Auckland

Digitally Generated Plan
Generated on: 21/10/2019 06:23am | Page 40 of 50

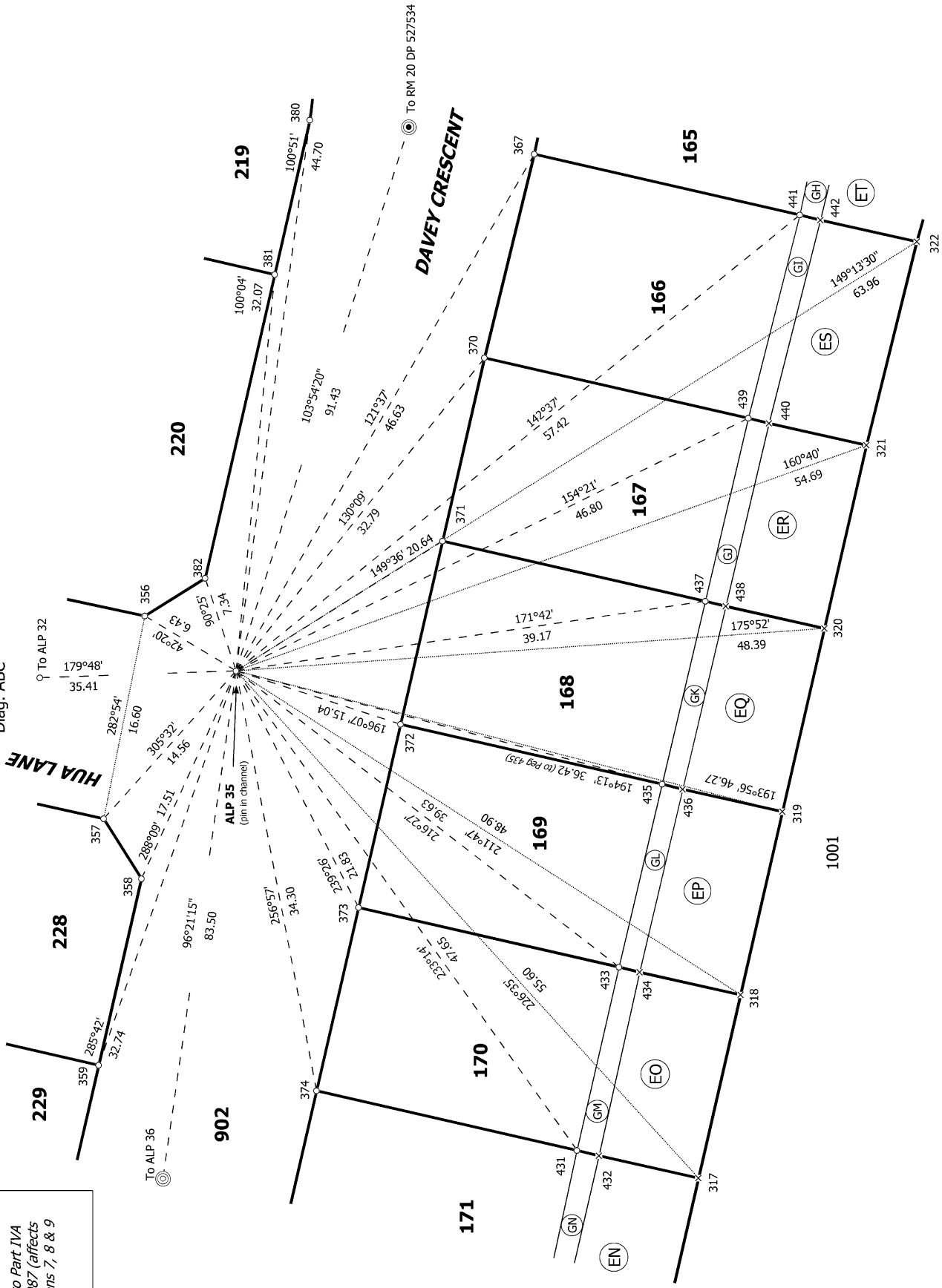
Lots 48-53, 164-173, 196-212, 216-230, 902-904 & 1001 being a Subdivision of
Lot 1001 DP 527534

Surveyor: Kendall Lisa Reid
Firm: Wood & Partners Consultants Ltd
Survey Date: 4/06/2019

CSD Plan
LT 534851
Approved on: 21/10/2019



Diag. ABC



All lots are subject to Part IVA Conservation Act 1987 (affects land formerly Sections 7, 8 & 9 SO 70137)

S 8/10

Land District: North Auckland

Digitally Generated Plan

Generated on: 21/10/2019 06:23:00 Page 41 of 50

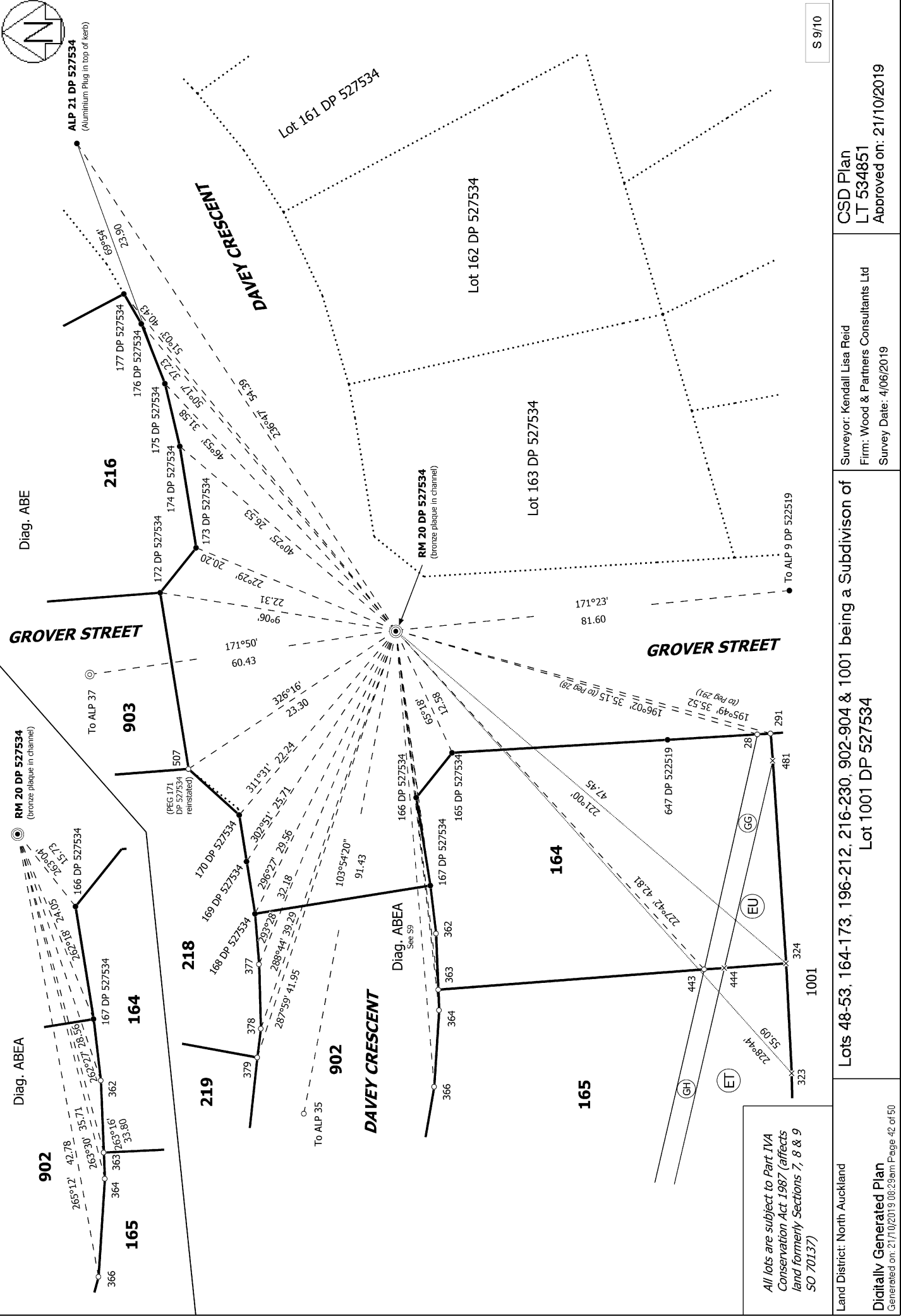
Lots 48-53, 164-173, 196-212, 216-230, 902-904 & 1001 being a Subdivision of Lot 1001 DP 527534

Surveyor: Kendall Lisa Reid
Firm: Wood & Partners Consultants Ltd
Survey Date: 4/06/2019

CSD Plan
LT 534851
Approved on: 21/10/2019



ALP 21 DP 527534
(Aluminium Plug in top of kerb)



S 9/10

Lots 48-53, 164-173, 196-212, 216-230, 902-904 & 1001 being a Subdivision of Lot 1001 DP 527534

CSD Plan
LT 534851
Approved on: 21/10/2019

Surveyor: Kendall Lisa Reid
Firm: Wood & Partners Consultants Ltd
Survey Date: 4/06/2019

All lots are subject to Part IVA
Conservation Act 1987 (affects
land formerly Sections 7, 8 & 9
SO 70137)

Land District: North Auckland

Digitally Generated Plan
Generated on: 21/10/2019 06:23am Page 42 of 50



GODFREY DRIVE

GROVER STREET

Orewa River
Generally 2 - 5m Wide

Marginal Strip II

Marginal Strip HH

1001

1001

Lot 2 DP 311431

All lots are subject to Part IVA Conservation Act 1987 (affects land formerly Sections 7, 8 & 9 SO 70137)

Diag. AE

Diag. AD

To RM 20 DP 527534

To IS VIII DP 320230

To IS X DP 320230

ALP 9 DP 522519
(in concrete channel of new
kerb and channel)

ALP 8 DP 522519
(in concrete channel of
new kerb and channel)

Class A
Left Bank
Bdy is left bank of stream
Adpt DP 320230

Class A
Left Bank
Bdy is left bank of stream
Adpt DP 320230

Class A
Left Bank
Bdy is left bank of stream
Adpt DP 320230

648 DP 522519

650 DP 522519

651 DP 522519

652 DP 522519

653 DP 522519

654 DP 522519

655 DP 522519

656 DP 522519

657 DP 522519

658 DP 522519

659 DP 522519

660 DP 522519

661 DP 522519

662 DP 522519

663 DP 522519

To IS VII DP 198122

To 78 DP 463561

To RM 1 DP 522519

To IS XV DP 65871

To IS VIII DP 198122

To IS VII DP 198122

To IS VII DP 198122

To IS VII DP 198122

To IS VII DP 198122

To IS VII DP 198122

To IS VII DP 198122

To IS VII DP 198122

To IS VII DP 198122

To IS VII DP 198122

To IS VII DP 198122

To IS VII DP 198122

To IS VII DP 198122

To IS VII DP 198122

To IS VII DP 198122

To IS VII DP 198122

To IS VII DP 198122

171°23'

81.60

76°21'

30.65

170°38'30"

74.66

59°10'

121.17

229°51'

23.07

84°34'

92.60

88°10'30"

65.52

176°44'

23.50

235°00'

28.30

23 DP 320230

IS XV DP 65871

IT VIII DP 198122

IS XV DP 65871

IS XV DP 65871

IS XV DP 65871

IS XV DP 65871

IS XV DP 65871

IS XV DP 65871

IS XV DP 65871

IS XV DP 65871

IS XV DP 65871

IS XV DP 65871

IS XV DP 65871

IS XV DP 65871

IS XV DP 65871

IS XV DP 65871

IS XV DP 65871

S 10/10

CSD Plan
LT 534851

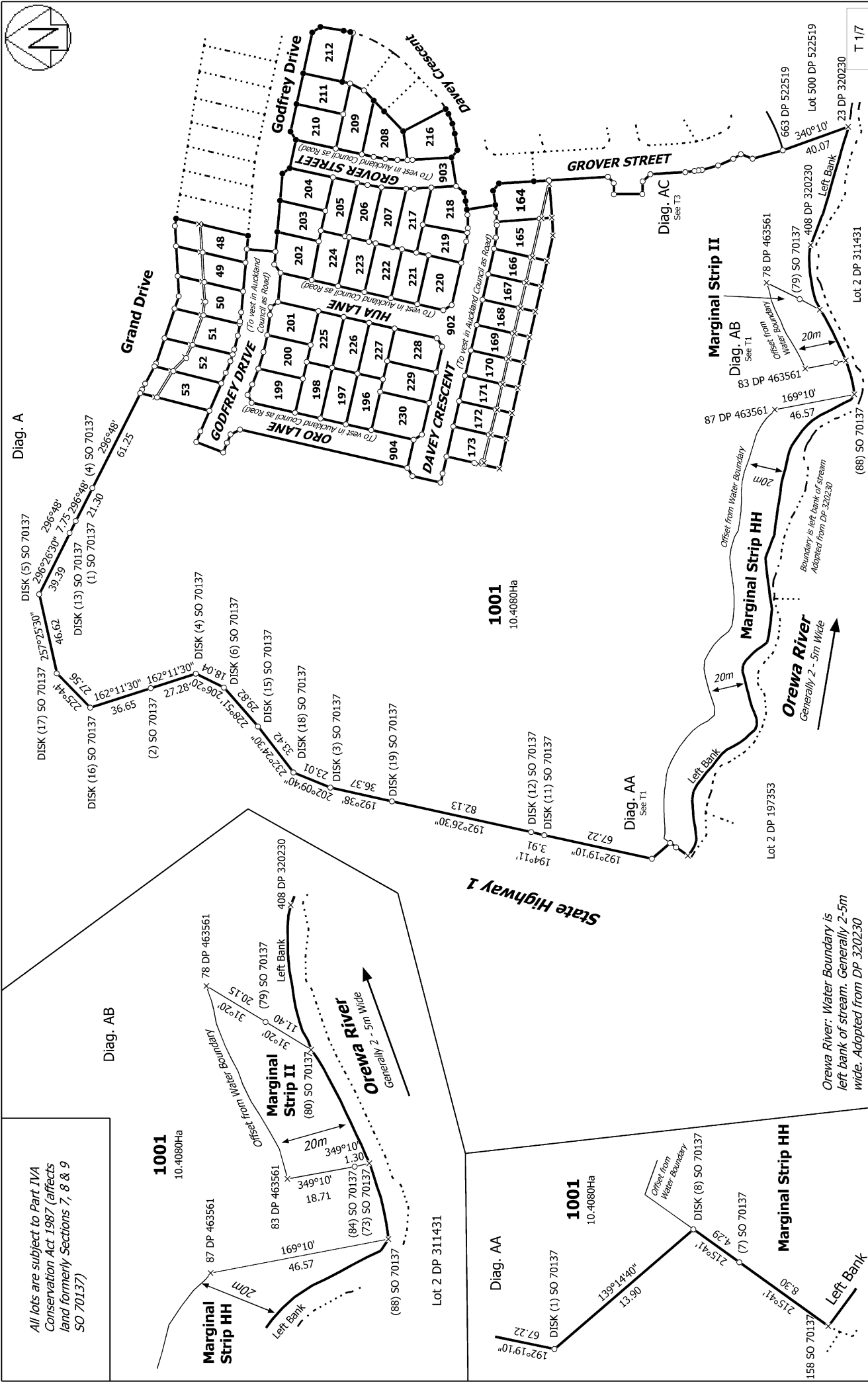
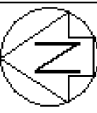
Surveyor: Kendall Lisa Reid
Firm: Wood & Partners Consultants Ltd
Survey Date: 4/06/2019

Lots 48-53, 164-173, 196-212, 216-230, 902-904 & 1001 being a Subdivision of
Lot 1001 DP 527534

Land District: North Auckland

Digitally Generated Plan

Generated on: 21/10/2019 06:23am Page 43 of 50

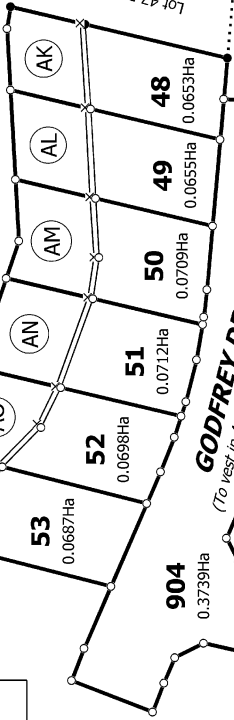


<p>Land District: North Auckland</p> <p>Digitally Generated Plan</p> <p>Generated on: 21/10/2019 06:23:00 Page 44 of 50</p>	<p>Lots 48-53, 164-173, 196-212, 216-230, 902-904 & 1001 being a Subdivision of Lot 1001 DP 527534</p> <p>Surveyor: Kendall Lisa Reid Firm: Wood & Partners Consultants Ltd Survey Date: 4/06/2019</p>	<p>CSD Plan LT 534851 Approved on: 21/10/2019</p>
--	---	--



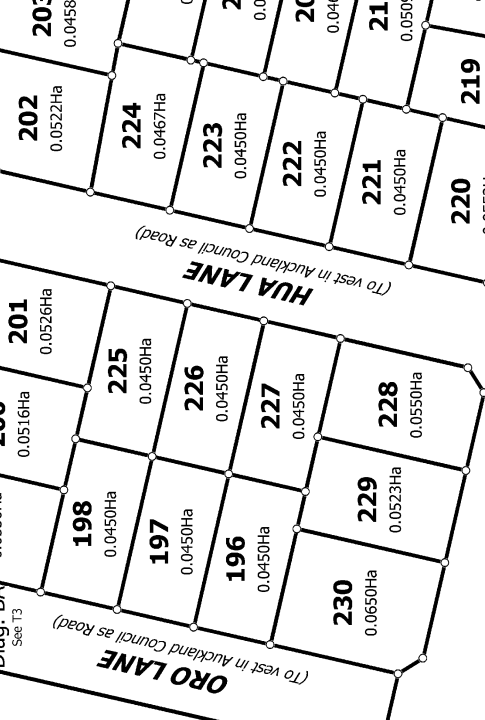
Diag. B
Grand Drive

Diag. BC
See T5



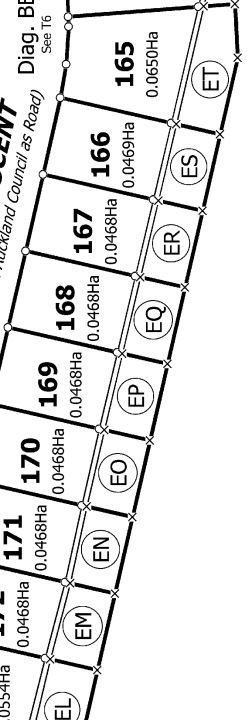
GODFREY DRIVE
(To vest in Auckland Council as Road)

Diag. BA
See T3



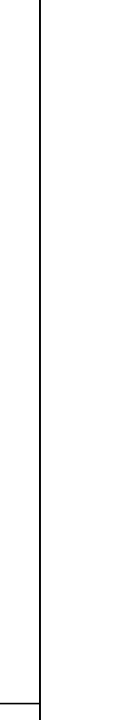
GROVER STREET
(To vest in Auckland Council as Road)

Diag. BD
See T7



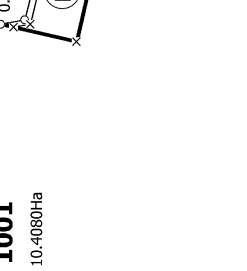
DAVEY CRESCENT
(To vest in Auckland Council as Road)

Diag. BE
See T6



ORO LANE
(To vest in Auckland Council as Road)

Diag. BB
See T4



HUA LANE
(To vest in Auckland Council as Road)

Diag. BB
See T4



DAVEY CRESCENT
(To vest in Auckland Council as Road)

Diag. BB
See T4

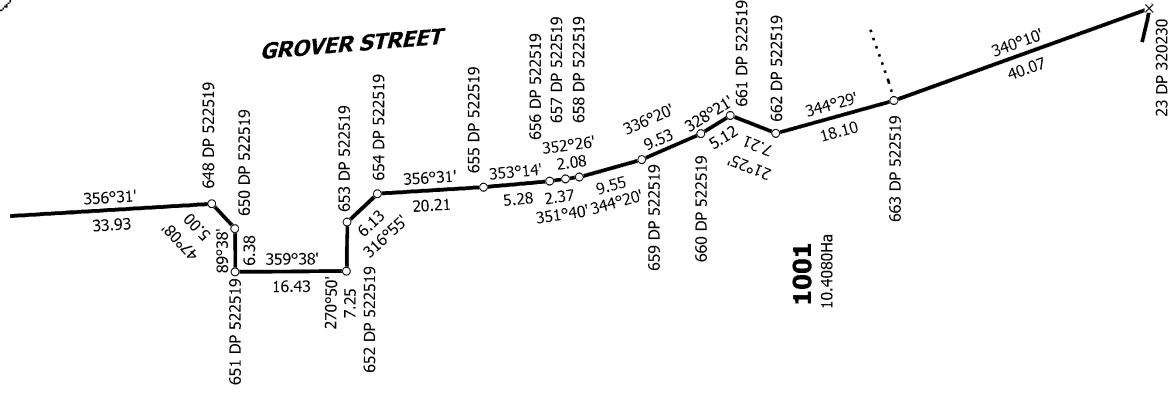


All lots are subject to Part IVA
Conservation Act 1987 (affects
land formerly Sections 7, 8 & 9
SO 70137)

1001
10.4080Ha



Diag. AC



T 3/7

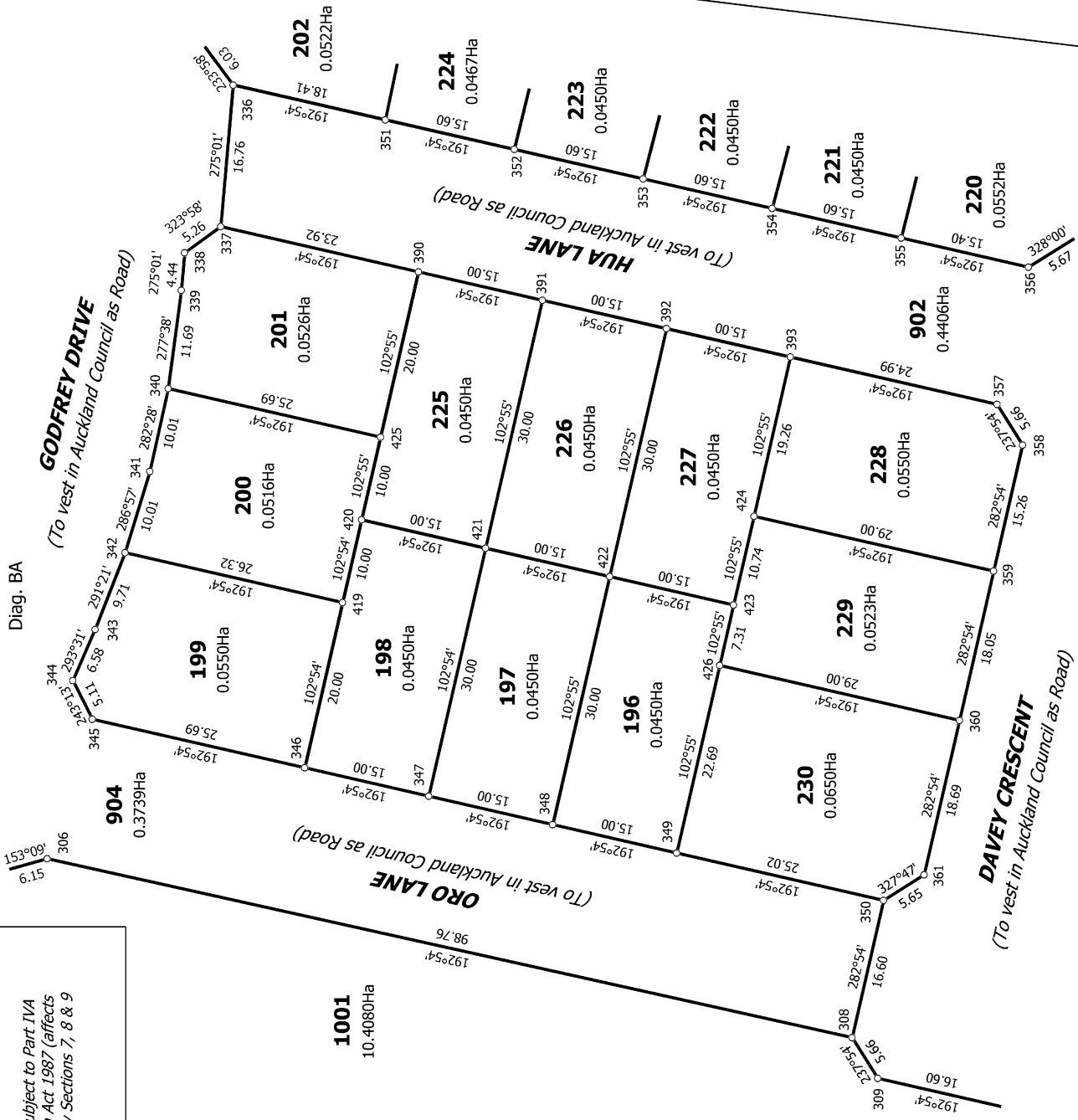
CSD Plan
LT 534851
Approved on: 21/10/2019

Surveyor: Kendall Lisa Reid
Firm: Wood & Partners Consultants Ltd
Survey Date: 4/06/2019

Lots 48-53, 164-173, 196-212, 216-230, 902-904 & 1001 being a Subdivision of
Lot 1001 DP 527534

Land District: North Auckland
Digitally Generated Plan
Generated on: 21/10/2019 06:23:00 Page 46 of 50

Diag. BA



GODFREY DRIVE
(To vest in Auckland Council as Road)

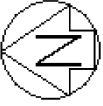
HUA LANE
(To vest in Auckland Council as Road)

ORO LANE
(To vest in Auckland Council as Road)

DAVEY CRESCENT
(To vest in Auckland Council as Road)

All lots are subject to Part IVA
Conservation Act 1987 (affects
land formerly Sections 7, 8 & 9
SO 70137)

1001
10.4080Ha



Diag. BB



1001
10.4080Ha

All lots are subject to Part IVA
Conservation Act 1987 (affects
land formerly Sections 7, 8 & 9
SO 70137)

T 4/7

Land District: North Auckland

Digitally Generated Plan

Generated on: 21/10/2019 06:23am | Page 47 of 50

CSD Plan
LT 534851
Approved on: 21/10/2019

Surveyor: Kendall Lisa Reid
Firm: Wood & Partners Consultants Ltd
Survey Date: 4/06/2019

Lots 48-53, 164-173, 196-212, 216-230, 902-904 & 1001 being a Subdivision of
Lot 1001 DP 527534



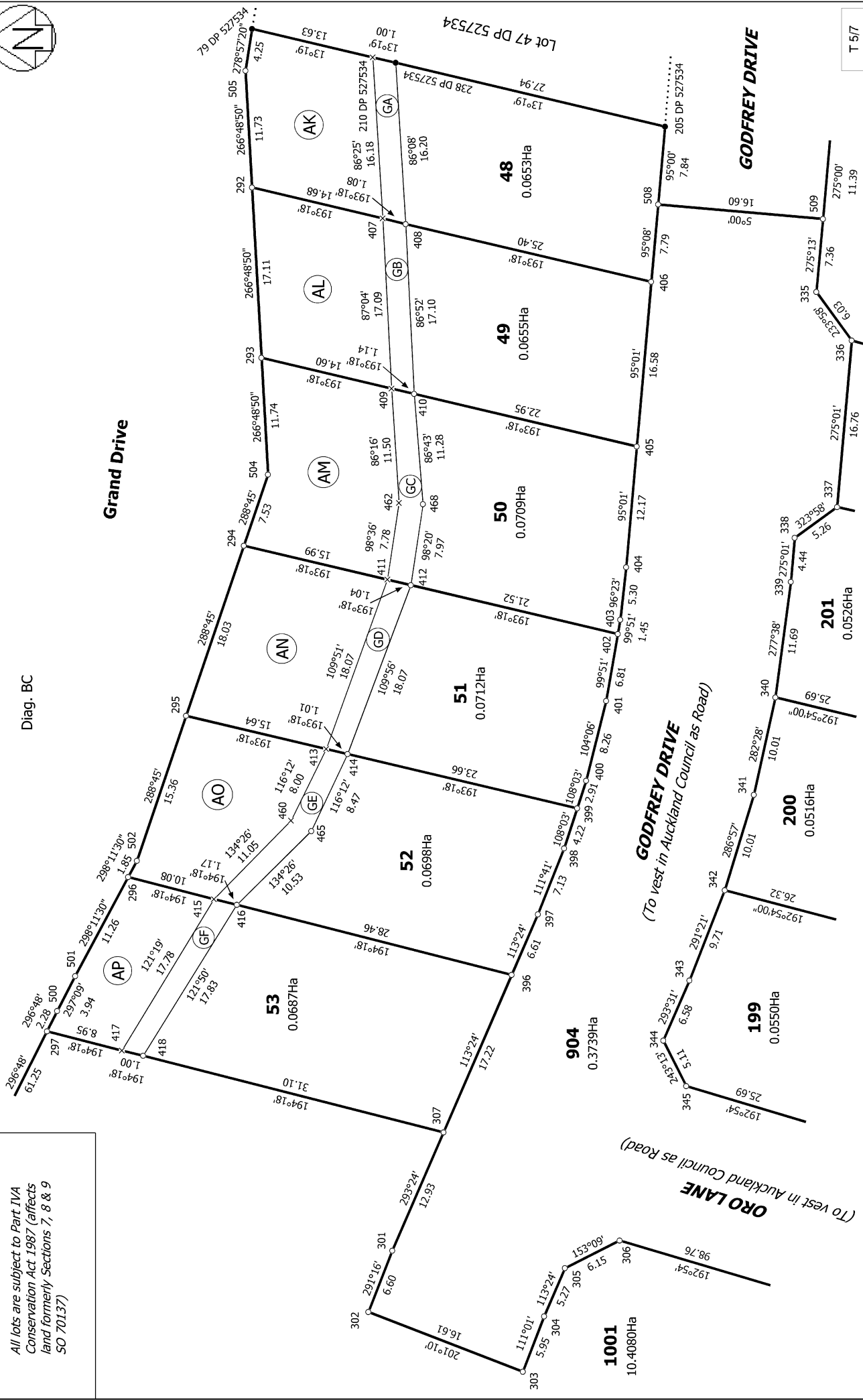
Diag. BC

Grand Drive

GODFREY DRIVE

GODFREY DRIVE
(To vest in Auckland Council as Road)

ORO LANE
(To vest in Auckland Council as Road)



All lots are subject to Part IVA
Conservation Act 1987 (affects
land formerly Sections 7, 8 & 9
SO 70137)

T 5/7

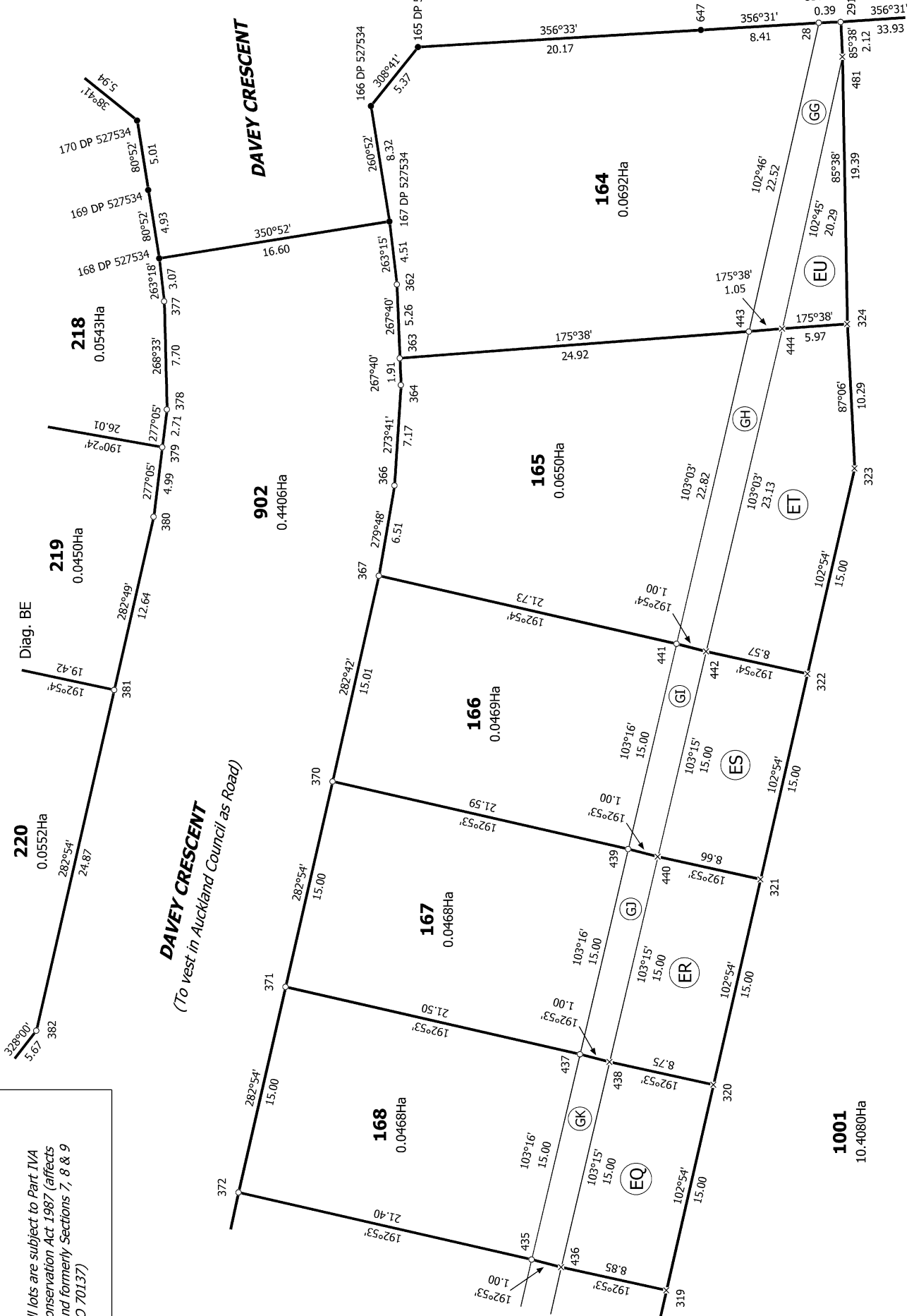
Land District: North Auckland

Digitally Generated Plan
Generated on: 21/10/2019 06:23:00 Page 48 of 50

Lots 48-53, 164-173, 196-212, 216-230, 902-904 & 1001 being a Subdivision of
Lot 1001 DP 527534

Surveyor: Kendall Lisa Reid
Firm: Wood & Partners Consultants Ltd
Survey Date: 4/06/2019

CSD Plan
LT 534851
Approved on: 21/10/2019

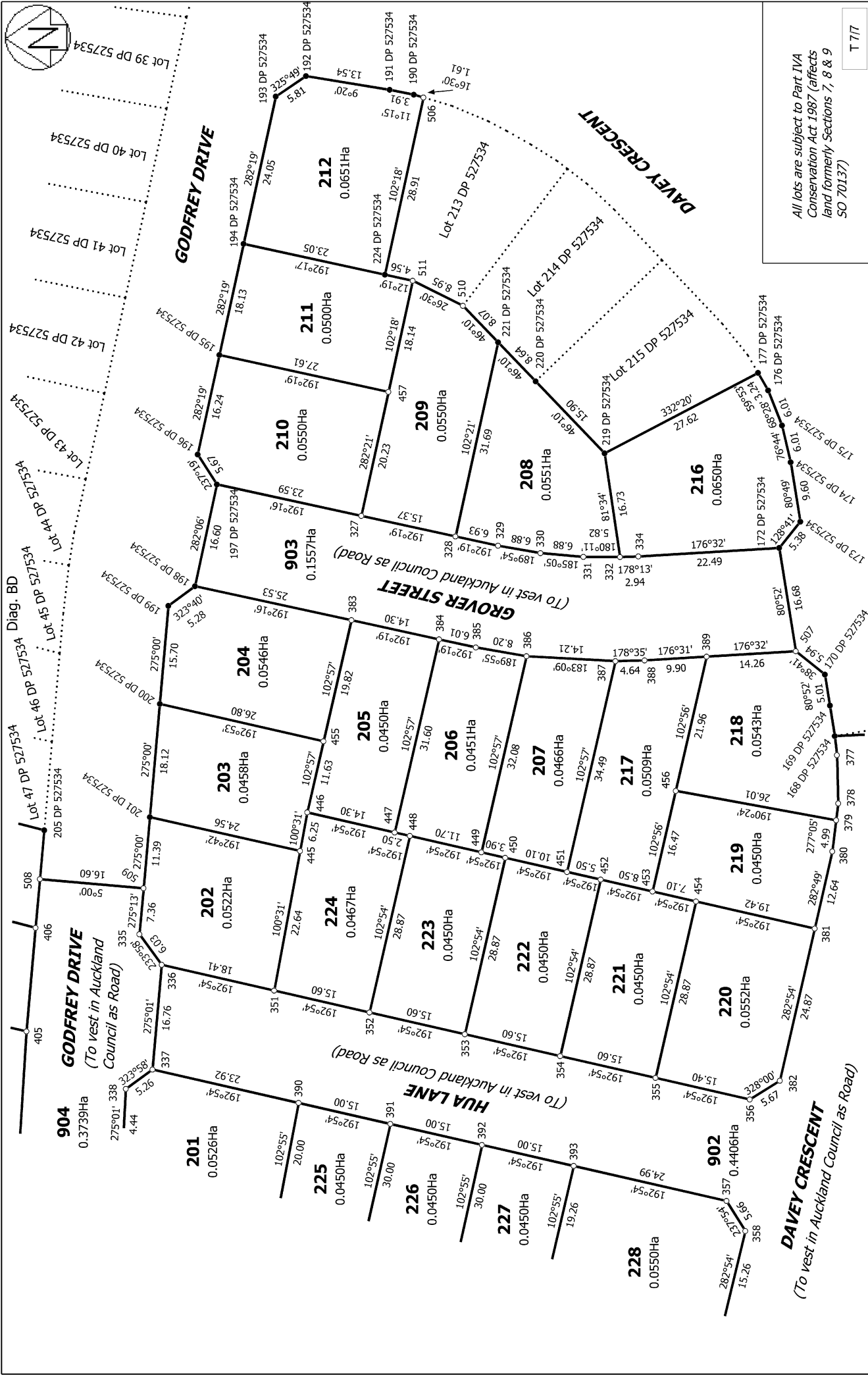


All lots are subject to Part IVA Conservation Act 1987 (affects land formerly Sections 7, 8 & 9 SO 70137)

DAVEY CRESCENT
(To vest in Auckland Council as Road)

GROVER STREET

T 6/7



Land District: North Auckland
 Digitally Generated Plan
 Generated on: 21/10/2019 06:23am | Page 50 of 50

Lots 48-53, 164-173, 196-212, 216-230, 902-904 & 1001 being a Subdivision of
 Lot 1001 DP 527534

Surveyor: Kendall Lisa Reid
 Firm: Wood & Partners Consultants Ltd
 Survey Date: 4/06/2019

CSD Plan
 LT 534851
 Approved on: 21/10/2019

All lots are subject to Part IVA
 Conservation Act 1987 (affects
 land formerly Sections 7, 8 & 9
 SO 70137)

T 717